



**Primescape
Products**

Industry Supply Catalog



** For the most up-to-date supply
catalog, download a copy at
www.primescapeproducts.com*



Phone: 800-872-4361 • Fax: 847-634-4126

Terms and Conditions

Orders can be placed by mail, phone, fax, or email using the following information:

Primescape Products Co.
2050 Clearwater Dr. • Des Plaines, IL • 60018-1916
Phone : 800.872.4361 • Fax : 847.634.4126
www.primescapeproducts.com

All orders are subject to a \$100 minimum.
(orders processed at below this minimum will be subject to a \$10 fee)

Pricing and Specifications: Primescape prices are for wholesale distributors only.

All prices reflect buyers' net cost in US currency and do not include freight, federal, state and local taxes, or any necessary specialty packaging charges. Buyer shall pay all such charges. Prices, finishes, and product specifications are subject to change without notice.

Payment Terms:

Advance Pay- Acceptable forms of payment include Cashier's Check, Money Order, Visa/Master Card, American Express, Discover Card, or Wire Transfer

Cash on Delivery- COD shipments will be paid by check at time of delivery. MAKE CHECKS PAYABLE TO PRIMESCAPE PRODUCTS Company. COD orders are subject to carrier service charges.

Open Accounts- Terms are Net 30 days after shipment and are extended to firms that have established credit with Primescape Products. We reserve the right to place customers in COD/Advance pay status if an account becomes inactive through non-use, or if an account fails to meet the above terms. Applications for an open account are available at www.primescapeproducts.com or by calling us.

Order Deposit- Orders for custom product or for quantities in excess of normal stock levels are subject to an advance deposit of 50% of the order total.

Resale Tax Certificate - Accounts who furnish a resale tax certificate will not be taxed on any orders. Please specify if you are ordering supplies for non-resale and would like to be taxed. Once a resale tax certificate is submitted Primescape is not responsible for determining resale status of items ordered.

International Shipments (excluding Canada) - Payment terms on International shipments is full payment in advance by wire transfer. Information for completing the wire transfer will be provided by your sales representative when you place your order. Cashiers check or money orders will also be accepted for international shipments only if the funds are drawn against a U.S. Bank. In no instance will Primescape Products pre-pay the freight charges to a carrier of your choice and add it to your invoice. ***All payments must be in U.S. Dollars.***

*Condiciones de pago para envíos internacionales (excluyendo a Canadá) - Los pedidos internacionales deben de cancelar monto completo vía transferencia bancaria. Su representante le proporcionará la información necesaria para hacer el pago cuando su pedido este completo. Cheques certificados o giro postal serán aceptados solamente cuando los fondos son emitidos de un banco de los Estados Unidos. En ningún instancia, Primescape Products pagará por adelantado el flete de envío ni puede agregar estos costos a su factura. **Todos pagos tienen que ser en dólares Americanos.***

Inventory: We have an extensive inventory and we work very hard at ensuring that product is available for our customers as orders are placed. However, we will have times when certain products may not be readily available. The buyer will be notified of out-of-stock situations, along with an availability estimate for the product at the time of order in most instances. In addition, our customer service reps will advise the buyer of alternative products when out-of-stock situations occur.

Shipping policy: All product is shipped as FOB Origin. Unless otherwise requested by buyer, product will be shipped via carriers of our choice with shipping/handling, insurance, or additional packaging charges prepaid and added to the invoice. Primescape typically ships stock orders within 24 hours of receipt of order. A second invoice may be issued if charges related to residential or lift-gate service are required at time of delivery. If a specific shipping date is an important consideration, please call customer service to confirm product availability and shipping information.

Shipping Damage or Shortages:

Our products are thoroughly inspected prior to shipping and we go to great lengths to ensure that our products are sufficiently packaged. Unfortunately, damages during shipping do occasionally occur. We encourage you to inspect all packages before signing to accept the shipment. Please take the following steps to ensure the carrier's liability in the event of a damaged shipment:

- Count all cartons, noting any discrepancies.
- Inspect carton exterior, noting any visible damage.
- Open cartons (in the presence of the driver) if you suspect that damage has occurred.
- If damage is found, note the nature and extent of damage on the bill of lading or freight bill when signing to accept shipment or simply refuse to accept the damaged box noting that the box is being refused due to damage.

Occasionally damages are not discovered until after the driver has already left. In the event that a "concealed damage" is discovered, please contact Primescape Products at 847-634-4125 immediately so that we may replace the damaged merchandise to you and file a claim with the carrier.

Primescape Products must be notified within 5 days of receipt of damaged merchandise, or shortages. Failure to notify Primescape of any damages or shortages within 5 days of receipt may affect our ability to replace this merchandise.

Return Policy: No merchandise may be returned without our advance written consent. *All authorized returns are subject to a restocking charge of \$25 or 20% net invoice, whichever is greater. In addition, all related transportation costs are to be borne by the purchaser.* Authorized returns must be received in saleable condition, without exception. Credit will be withheld if merchandise is not saleable. Returns cannot be authorized after 30 days from date of the original shipment. Unauthorized returns will be refused. Only stock items are returnable.

Table Of Contents

Planter Accessories

Hanging Planter Accessories	4
-----------------------------------	---

Installation Materials

Poly Pebbles	5
Fresh Spanish Moss	5
Excelsior Spanish Moss.....	5
Moss Collars.....	5
Moss Rolls.....	5
Moss Cords	5
PolyTrays Top Shelf.....	5
Pro Toast.....	6
Capillary Wicks and Matting	6

Cork Pads	6
Plant Pallets	6
Surface Savers	6
FleurAmi Flexi-Liners	7
Deep Basket Liners.....	7
Shallow Vinyl Saucers.....	7
Container Sealant.....	7
Eco-Spacer (Foam Collar for Top Dressing).....	8
Grow Pot Steps (Styro Lifters)	8
Landscape Fabric.....	8
OASIS™ Floral Foam Disk.....	8
AquaFur	8

Professional Interior Landscape Tools

Soil Probes	9
Plant Paws (Large, Medium & Tips)	9
Pocket Sweep	9
Junior Flip-Up Feather Duster.....	10
Primescape 2.5 Gal. Watering Can.....	10
Watering Can Apron (for 2.5 Gal. Can)	10
DRAMM 7 Liter Watering Can	10
Hand-Held Magnifier	10
Twin-Neck Quart Bottle (empty).....	10
Poly Pint & Gallon Bottle (empty).....	10
AMPROBE Light Meter.....	10
Moisture Meter	10
Poly Backed Throw/Drip Catcher.....	10

1/2 Gal. Hand Pump Compressed Air Sprayer...	11
1-Gal. Hand Pump Compressed Air Sprayer.....	11
Primescape Sprayer (24 oz.).....	11
4' Tech Tube	11
Siphon Pump.....	11
Preferred Pruner	11
Folding Pruning Saw.....	11
6' & 10' Long-Reach Cut and Hold Pruner.....	11

Felco® Pruners & Holster	12
Fiskars Pruners, Shears, Scissors	12
Kaddy Belts	13
Kaddy Bags	14

Fertilizers

Psi Matric Watering Regulating Surfactant.....	15
Superthrive Plant Hormone	15
Primescape Liquid Tropical Fertilizer	15
Drum Pail Pump (for Primescape Fertilizer)	15
Pro-Tekt.....	15
Companion 2-3-2 Microbial Inoculant.....	16

Cleaners

Leaf-Tek® Plant Cleaner	16
Silkbrite® Silk Plant Cleaner.....	16
Primescape Citrus Formula (plant cleaner).....	16

Pixie Sparkle Leaf Shine / Cleaner	17
--	----

Pest Control

Marathon II (for foliar and systemic insect control)	17
Talstar® F (insect control & miticide).....	17
Whitmire® Yellow Monitoring Cards.....	18
Merit® 75 WP Insecticide (Concentrate).....	18
Merit® 0.5G Insecticide (Ready-To-Use)	18
Safer® Insecticidal Soap.....	18
Gnatrol WDG.....	18
Safari 20 SG	18

Sub-Irrigation

Planter Technology CWC® Series.....	20
Planter Technology CWF® Series	20
Planter Technology CWI® Series	20
Planter Technology CWM® Series.....	20
Funnels, Rubber Stoppers, Sensor Tubes.....	21
Bio-Barrier Root Control System.....	21

Water Machines & Sprayers

DRAMM Heavy-Duty Sprayer	23
DRAMM Watering Tools.....	23
Aquamate Portable Water Delivery System.....	24
Waterboy F-Series	25
Waterboy M-Series & Utility Models	26
Waterboy Accessories.....	27

Holiday Splendor

Highlander's® Speed Covers	28
----------------------------------	----



800-872-4361

www.primescapeproducts.com

"SE HABLA ESPAÑOL"

Hanging Planter Accessories

Hanging baskets and bowls often require strong support. Primescape's hanging supplies are rugged enough to support a heavy plant, yet subtle enough not to detract from the overall interior landscape.

Stainless Steel Cable Assembly



Item	Description
SC-40*	40" Long
SC-XW	Collars & Screws (replacements only)

Some assembly required;
Holds up to 40 pounds!
* includes set of collars & screws

Ceiling Clip



Item	Description
CC-02	9/16" Track
Available Colors: Chrome (-C)	



Hand E Hite

Servicing hanging baskets is a breeze with this unique pulley system that allows you to lower baskets up to 6 ft. It also holds up to 40 lbs.

HEH



800-872-4361

www.primescapeproducts.com

"SE HABLA ESPAÑOL"

Installation Materials

Poly Pebbles

Made from recycled plastic! Ideal as a top dressing for planted containers. Adds a designer look to your plant installation. Our Poly Pebbles look and feel just like stone, but weigh only a fraction of the real thing. Black is now also available in a new smaller-size!



Use discretion when installing in areas populated by small children.

Regular-Size Pebbles: High-density coverage equals 2 square feet per bag; Low-density coverage equals 4 square feet per bag.

Small Pebbles (available only in black) High-density coverage equals 6 sq. inches per bag; Low-density coverage equals 1 sq. ft. per bag.

*Denotes special availability



Regular

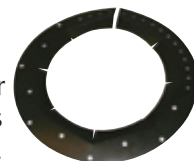


Small

Item	Color	Unit	Case
POLY-WHT	White	Bag	5
POLY-TAN	Tan	Bag	5
POLY-GRY	Grey	Bag	5
*POLY-RED	Red Clay	Bag	5
POLY-BLK	Black	Bag	5
POLY-BLK-SM	Black	Bag	20
POLY-WHT-SM	White	Bag	20

Moss Collars (Round)

Makes moss easy! Adjust plastic collar to appropriate size, then attach moss using sturdy plastic ties (included). When it's time to switch out the plant, simply lift out the entire bed of moss in one shot!



Item	Unit	Grow Pot	Fits
------	------	----------	------

MSC20 Single 10" to 14" AS15.19



Moss Rolls

100% natural dormant moss (on nylon backing for easy cutting). Neither dried nor preserved, this moss will actually grow! Green Tree color enhanced with natural, permanent dye.

Item	Color	Unit	Case
MR-GT18	Green Tree	4' x 18' Sheet	1
MR-SP18	Spanish	4' x 18' Sheet	1
MR-GT4X2	Green Tree	2' x 4' Sheet (in bag)	6
MR-SP4X2	Spanish	2' x 4' Sheet (in bag)	6



Pro Toast

Organic toasted hardwood great for interior/exterior use. Flame and decay resistant. If applied in 1" depth, one bag covers about 50 square feet.

Item	Unit	Pallet
I-PT	50 lb. bag	25 bags

Now available in Dark or Medium

* be sure to indicate choice when ordering!

PolyTrays Top Shelf

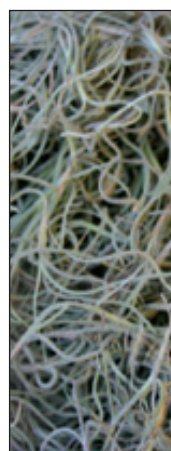


New adjustable PolyTrays are ultra-sturdy and easy-to-install. Made from 100% recycled plastic, they

are designed to hold moss or PolyPebbles above the dirt for easier watering and air flow.

Item	Fits
POLY-TRAY-CR-SM	7.5"-12" pots
POLY-TRAY-CR-LG	12"-20" pots

*Minimum purchase for either size is 1 case (10 pcs.)



Fresh Spanish Moss

Air-dried, fumigated and free of twigs and leaves, Fresh Spanish Moss is shipped directly to you from Florida. Available in convenient 10 lb. bags and also in 25-lb. or 28-lb. boxes. Not fire-retardant. 25 lbs. will top-dress approximately (20) 16" decorative containers.

Item	Unit
I-SM10	10 lb. bag
I-SM28	28 lb. box

Excelsior Spanish Moss

Eliminate problems with mold, mildew, odor and insects with this shaved-wood product. An excellent alternative to real Spanish moss.

For best freight order a minimum of 6 boxes!

Item	Unit
I-SME	25lb. box
*I-SME-FR5	5 lb. box
*I-SME-FR	25lb. box



Forest Green (01) Sage (02) Natural (03)

* This product is intended for use in interior applications where combustion-modified chemicals applied to the fibers are not subject to removal by rain or other exposure. Only use I-SME-FR and I-SME-FR5 for base coverage of artificial foliage. Do not use I-SME-FR and I-SME-FR5 in live plant arrangements where watering will cause the product to lose its combustion-modified properties.

In-stock orders will be shipped within a 24 hour time frame.



800-872-4361

www.primescapeproducts.com

"SE HABLA ESPAÑOL"

Installation Materials

Capillary Wicks & Matting

Ideal for sub-irrigating plant material in greenhouse and interiorscaping applications. This thick polyester material is strong and durable. The material is specially woven to provide optimum water retention.

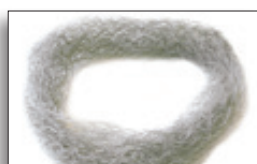
Item	Length	Pot Size	Case
M-WDW12	12"	7"	100
M-WDW18	18.5"	11"	100
M-WDW22	22"	14"	100
M-WDW26	26"	18"	100
I-CMAT	25"	-	100
*I-CROLL	50'x8"	-	4

*double the thickness of I-CMAT



Moss Cords

Synthetic strands of moss tied together for a fast and simple top dressing. Simply lay over soil and fluff. Fire retardant and reusable!



Item	Fits
MC-68	6" to 8" pots
MC-1012	10" to 12" pots
MC-1416	14" to 16" pots
MC-1720	20" pots

Cork Pads

Made with a thin layer of cork and a durable layer of plastic, these pads provide protection while enhancing the appearance of your plantings. Water condensation is absorbed by the cork layer and kept from the floor surface by the water-proof plastic layer.



ROUND PADS

Item	Diam.	Item	Diam.	Item	Diam.
CP04	4"	CP11	11"	CP18	18"
CP05	5"	CP12	12"	CP19	19"
CP06	6"	CP13	13"	CP20	20"
CP07	7"	CP14	14"	CP22	22"
CP08	8"	CP15	15"	CP24	24"
CP09	9"	CP16	16"	CP26	26"
CP10	10"	CP17	17"	CP30	30"

Plant Pallets



Avoid moisture and mildew stains as well as other floor damage with the Plant Pallet. A heavy duty plastic disc with concentric weight-distributing legs which elevate the planter 1/2" above the surface, allowing for air movement. 400 lb. weight capacity.

Item	Diameter	Case
PP-14CL	12"	36
PP-15CL	16"	36

Surface Savers



These provide the ultimate in surface protection for floors, carpets, and furniture! These durable clear plastic ovals protect surface from water condensation and scratching. The unobtrusive feet allow for air circulation which promotes the evaporation of planter condensation. Especially made for use with heavy-weight objects.

Item	Size	Description	Case
SS06	6.5"	Fits 7-8" Planters	24
SS10	9.5"	Fits 10-12" Planters	24
SS12	11.5"	Fits 14-16" Planters	12
SS16	15.5"	Fits 20"+ Planters	12

In-stock orders will be shipped within a 24 hour time frame.

Flexi-Liners

- Provides instant leak-prevention for any container
- Made from soft, flexible, high-quality plastic which *can be cut or bent as needed*
- Prevents calcium deposits on surface of planters; helps prevent excessive evaporation

NEW



SUPER-FLEXIBLE!
Fits any shape!



Item	Top Dia.	Bottom Dia.	Height	Units per Case
16020	8.3"	6.3"	6.3"	25
10267	11.8"	8.3"	8.7"	25
10269	15.7"	11.0"	11.8"	50
10270	17.7"	12.6"	13.8"	50
16021	21.7"	16.9"	15.7"	50
16022	25.6"	20.9"	18.9"	25

Deep Basket Liners



Item	Top Dia.	Bottom Dia.	Height	Units per Sleeve	Sleeves Per Case	Case
I-VBL04	4"	2 1/2"	2 3/8"	25	16	400
I-VBL05	5"	3"	3 1/4"	25	16	400
I-VBL06	6"	4 1/4"	3 1/4"	25	12	300
I-VBL07	7"	5"	3 1/2"	25	12	300
I-VBL08	8"	6"	3 1/2"	25	8	200
I-VBL09	9"	7"	3 1/4"	25	8	200
I-VBL10	10"	8"	3 3/4"	25	12	300
I-VSD11	11"	8"	2 7/8"	25	4	100
I-VSD12	12"	10 1/2"	3 1/4"	25	4	100
I-VSD14	14"	12 1/2"	3 1/2"	25	4	100
I-VSD15	15"	13 1/2"	3 1/2"	25	4	100
I-VSD17	17"	15 1/2"	3 1/2"	10	10	100

Build up planter to the right height, drop in Flexi-Liner, and trim as needed!



Shallow Vinyl Saucers



Item	Top Dia.	Height	Units per Sleeve	Sleeves Per Case	Case
I-VS04	4"	1.5"	25	40	1000
I-VS05	5"	1.5"	25	40	1000
I-VS06	6"	1.5"	25	40	1000
I-VS07	7"	1.5"	25	40	1000
I-VS08	8"	1.5"	25	24	600
I-VS10	10"	1.5"	25	12	300
I-VS12	12"	1.5"	10	20	200
I-VS14	14"	1.5"	10	10	100
I-VS17	17"	1.5"	5	20	100
I-VS21	21"	3"	5	5	25

In-stock orders will be shipped within a 24 hour time frame.



800-872-4361

www.primescapeproducts.com

"SE HABLA ESPAÑOL"

Installation Materials



Eco-Spacer (Foam Collar for Top-Dressings)

Made from bio-based soy bean oils, not petroleum! Adhesive-backing* adheres to most planter surfaces. The Eco-Spacer fills the gap between the grow pot and the edge of the planter, keeping your top dressing material from falling inside the container.



For best freight order a minimum of 4 cases!

Item	Size	Case
FS-2236	36x2x1.5"	144
FS-4436*	36x4x4"	25
FS-4456*	56x4x4"	40

* No Adhesive

Grow Pot Steps (styro lifters)

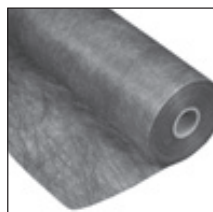


Raise plantings in decorative containers with this dense, lightweight foam block. Available as pre-cut blocks in 4 convenient sizes.

Item	Size	Thickness	Case
SL-0606S	6x6"	3/4"	528
SL-0606L	6x6"	1.5"	256
SL-0909S	9x9"	3/4"	204
SL-0909L	9x9"	1.5"	96

Landscape Fabric

Standard weight - 3.2 oz./sq. yd. 6' wide x 300' long roll (1800 sq. ft.). Use this fabric as a soil separator when creating a drainage fill layer, or a weed barrier over sub irrigation units.



Item
I-LF3



OASIS™ Floral Foam Disk

Irrigate blooming plants in watertight decorative containers with the OASIS™ Floral Foam Disk. Place in the bottom of a watertight container and add water to the top of disk. Plants absorb water from the OASIS™ Disk through holes in the bottom of the grow pot. Used successfully with both free-standing and in-ground blooming plant rotation programs.

Item	Dia.	Ht.	Case
OD4	4"	3/4"	420
OD55	5.5"	1.125"	138
OD7	7"	1.125"	103

**OD55 fits the
WPH-7 Liner**

AquaFür

**AQ6 fits the
WPH-7 Liner**

New formula! 100% synthetic material (made from recycled soda bottles). Uses only 12-16 oz of water per cycle. Composition does not promote growth of mold or fungi. Longer-lasting *thinner* disc works consistently for over 12 months! Lasts 10 times longer than OASIS Discs! No wetting agent needed. Can be disinfected between uses by soaking in a mild bleach solution.

Item	Dia.	Ht.	Case
AQ5	5"	.375"	108
AQ6	6"	.375"	96
AQ8	7"	.375"	56

In-stock orders will be shipped within a 24 hour time frame.



800-872-4361

www.primescapeproducts.com

"SE HABLA ESPAÑOL"

Interior Landscape Tools



30" Ultra-Probe Soil Sampler

Patented design allows for soil testing at 12 depths for planting beds. Steel construction.

Item
P-UP



12" TerraProbe Sampler

Patented design allows for soil testing at 4 different depths for 6"-17" deep containers. Steel construction.

Item
P-TP



12.5" Soil Sleuth

The Soil Sleuth is made of a high impact, sturdy acetal plastic. Avoid rust due to contact with soil, fertilizers or water. It gathers soil samples at 5 different levels, and with its rounded point does not harm plant roots.

Item
P-SS



18.5" Probe-Rite Soil Probe

Finally a light-weight probe that won't break as easily as the plastic ones! This probe is made of aluminum and has a convenient hoop design that hooks right into a belt loop. Eco-friendly rust-proof coating made from Zinc Dichromate. 18" long with three notches.

Item
P-PR

Mega Plant Paw Large



5.5" x 11"
Fits the hand
like a mitten.

Item
P-Mega-L

Plant Paw Tips



Plant Paw Tips cover fingers for easy cleaning of plants and other surfaces. Hand-washable/ machine-dried.

Item
P-Tip

Mini Plant Paw Medium



5" x 6" Fits
around wrist
when not in use.

Item
P-Mini-M



Pocket Sweep

Cleans up spills and messes without cords, batteries or bags. Natural boar bristle brush sweeps up sand and soil.

(Must Order in packs of 3)

Item
PSW



800-872-4361

www.primescapeproducts.com

"SE HABLA ESPAÑOL"

Interior Landscape Tools



Junior Flip-Up Feather Duster

7" ostrich feathers retract into a 6" durable plastic handle.

Item
D-J

Primescape 2.5 Gal. Professional Watering Can



100% recyclable, and made from 50% recycled material! Dark brown seamless molded polyethylene construction. Designed for the interior landscape industry, features a large handle for good balance.

Item
H2O

AMPROBE LIGHT METER



PROFESSIONAL DIGITAL LIGHT METER ACCURATELY MEASURES IN FOOT CANDLES OR LUX. WITH A RANGE OF 1 TO 20,000 IN FOOT

Item
LM

Hand-Held Magnifier



Magnifies plant pests 10 times their actual size. Battery operated light illuminates viewing area immediately in front of the lens.

Item
M-10x

DRAMM 7 Liter (1.8 Gal.) Watering Can



Smaller and lighter than the Primescape watering can. Molded plastic with large handle and long spout with removable nozzle. Stocked in Green only. 1.8 Gallons.

Item
H2O-7L



Poly Pint Bottle

Empty poly pint bottle.

Item	Ea.
DX115	\$1.12 bottle
DX115a	\$.45 cap



Twin-Neck Qt. Bottle

Empty poly twin-neck bottle.

Item	
DX130	bottle
DX130a	cap
BE SURE TO ORDER 2 CAPS PER BOTTLE!	

Poly Backed Throw/Drip Catcher

Sized for easy handling with replacements in mind. 36"x30" poly backed absorbent pads are perfect for installers & techs. Protect surfaces from spills & plant shines. Grey/Black. **Sealed three per bag - must order in multiples of 3!**

Item
PBT3630



Moisture Meter

Item
MOM

In-stock orders will be shipped within a 24 hour time frame.



800-872-4361

www.primescapeproducts.com

"SE HABLA ESPAÑOL"

Interior Landscape Tools

1/2-Gal. Hand-Pump Compressed Air Sprayer

Half-gallon capacity hand-held sprayer features corrosion and impact resistant tank. Hand pump, with continuous on-off trigger action. High-density polyethylene construction.

Item
SP-P

1-Gal. Hand-Pump Compressed Air Sprayer

1-gallon capacity sprayer features corrosion and impact resistant tank. Hand pump, with continuous on-off trigger action. High-density polyethylene construction.

Item
SP-K

Siphon Pump

Easy to use and convenient to carry, the Siphon Pump is the proper tool for removing excess water from plantings. Comes w/ 20" tube.

Item
SI



Primescape Sprayer

This hand-held 24 oz. bottle sprayer has an adjustable head for an array of spray intensities. Grade marks on side for easy, accurate filling. Great for misting plants or cleaning leaves.

Item
SP-S trigger & bottle
S-TS trigger-only
DX117 bottle-only



4' Tech Tube

Our Tech Tube is clear blue plastic tubing. When attached to a standard faucet, allows water to flow into watering can.

Item
H4T

Folding Pruning Saw

Professionally prune specimen plants using this hand held tool. In use, a lock holds the blade in place. It folds into an unbreakable handle. 10 teeth per inch.

Item
P-F18H



6' or 10' Long-Reach Cut-N-Hold Pruner

Features built-in branch gripper to prevent clippings from falling when cut. One-piece handle. Ideal for pruning roses. P-C6 is adjustable from 4' to 7'. P-C10 is adjustable from 6' to 10'.



one side cuts



the other grips!

Item
P-C6
P-C10



Handle
locks for
safety!

Preferred Pruner

A superior quality professional pruner. Field tested and recommended by leading landscaping firms as their pruner of choice. A great value.

Item
P-PP



In-stock orders will be shipped within a 24 hour time frame.



800-872-4361

www.primescapeproducts.com

"SE HABLA ESPAÑOL"

Interior Landscape Tools



Felco Pruner Holster

Durable leather construction with metal clip for attaching to belt.



Item	Ea.
P-H	\$9.12



Felco Fitted Handle Pruner F-2

Recognized as the finest pruner made. This pruner features hardened steel blades and lightweight handles shaped for comfort. Replacement blades available.

Item	Ea.
P-FHR	
P-RBR	



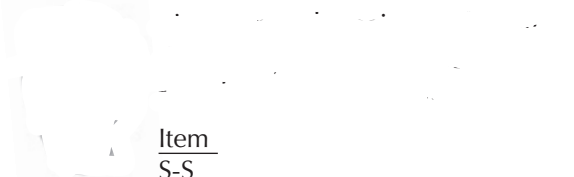
Item
FIS-9921

Fiskars Soft-Touch Micro-Tip Scissors

Unique micro-tip for precise cutting in tight spaces. Easy-action spring gently opens blades. Smooth contoured handle for better comfort, and control. Precision-ground blades, and adjustable screw to modify tension. For left or right-handed use.

Fiskars

Sharpener



Item
S-S

7" Fiskars Take-Apart Garden Scissors



These scissors are great for everyday trimming of foliage. Blue Handle

Item
S-GS

8" Fiskars Scissors



Original molded orange comfort handle. Stainless steel 8" blades. Left & right available.

Item
S-R
S-L



Fiskars UltraBlade

UltraBlade cuts with less effort, offers corrosion-resistance greater than that of stainless steel.

Item
FIS-8109

9" Fiskars Pinking Shear

Ideal for ornamental trimming and detail work of tropical foliage. Orange handle.

Item
S-PKS



Fiskars Pruning Stick

62" long

This lightweight yet rugged pruner allows you to prune at ground level while standing. Long enough to prune tall trees easily and safely.

Item
P-9234

Fiskars Telescoping Pruning Stick

- Rotating cutting head
- Dual activated cutting
- Alum/fiberglass construction
- Adjustable saw blade angle
- 15" Saw blade attachment
- 1-1/4" cutting capacity
- Extends 8-13'

Item
FIS-9240



800-872-4361

www.primescapeproducts.com

"SE HABLA ESPAÑOL"

Interior Landscape Tools

Kaddy Belt w/ Snap Buckle



Has large pocket 15.5" x 13" with three smaller pockets inside. Outer pocket has velcro closure. Belt has padding on it for more support. Holds tools, paperwork, bottles, phone, and anything else you may need with you.

Item _____
KP400-

Large

Pocket Kaddy



Large-KP302

9.5" x 12" with a fully adjustable belt and 1.5" standard buckle. 5 pockets of varying sizes, one with a velcro closure.

Item _____
KP302-



800-872-4361

www.primescapeproducts.com

"SE HABLA ESPAÑOL"

Interior Landscape Tools



Trash Bags

Durable nylon bag for storing leaves and other refuse.
Round, wire-lined opening stays open for easy access.

	Round	Bottom	
Item	Opening	Width	Height
KP601-	6"	8.5"	12.5"
KP602-	7"	11.5"	14.5"

Easily attaches to belts and
watering machines with
velcro loop.

Item
KP601-
KP602-



800-872-4361

www.primescapeproducts.com

"SE HABLA ESPAÑOL"

Fertilizers, Cleaners, & Pest Control

PLEASE REFER TO OUR WEBSITE FOR LABELS & MSDS SHEETS

Psi Matric Watering Regulating Surfactant



Distributes water and chemicals throughout the grow pot or container. Improves size and uniformity of root and shoot growth. Reduces drying around the edges of containers and improves plant survival rate after transporting.

Guaranteed Minimum Analysis:

APK 100% Active Polyols

Item	Description	Case
C-PSI-GAL		4

Primescape Liquid Tropical Fertilizer Concentrate



An excellent 9-3-6 ratio fertilizer that nourishes plant health with essential elements. Non-staining PRIMESCAPE FERTILIZER is also chloride-free. Use

each time you water your tropical plants.

Item	Description	Case
CPF-16	16 oz.	12
CPF-128	1 Gal.	4
CPF-5	5 Gal.	1



Drum Pail Pump

Fits 5 gal. and 55 gal. of Primescape Fertilizer.

Item	Case
C-Pump	1

Superthrive Plant Growth Hormone



Mix of 50 vitamins and minerals to boost plant health. Made from Carbon-Hydrogen-Oxygen natural organic crystals.

Not a fertilizer. Mix with a fertilizer or with clean water. Use regularly for stronger flowers, leaves, and roots. Ask your Primescape representative about using this product with **Companion**, **EcoEXEMPT IC²** and **PSI Matric** as a "green drench" to maintain healthy plants.

Item	Description	Case
C-ST4	4 oz.	12
C-ST16	16 oz.	12
C-ST32	32 oz.	12
C-ST128	128 oz.	4

Pro-Tekt



Increases plants metabolic activity and resistance to pathogens and environmental stresses. A concentrated liquid supplement which supplies higher levels of potassium and silicon to build strong cell walls in plants.

Item	Description	Case
C-PT-8	8 oz.	12
C-PT-QT	36 oz.	12

In-stock orders will be shipped within a 24 hour time frame.



800-872-4361

www.primescapeproducts.com

"SE HABLA ESPAÑOL"

Fertilizers, Cleaners, & Pest Control

PLEASE REFER TO OUR WEBSITE FOR LABELS & MSDS SHEETS



Growth Products Liquid Fertilizers, Micros, & Organics



Companion is a unique microbial inoculant that contains millions of beneficial soil microbes. It promotes a healthy, clean root system that resists stress and transplant shock. Ask your Primescape representative about using this product with **Superthrive**, **EcoEXEMPT IC²** and **PSI Matric** as a "green drench" to maintain healthy plants.

Item	Description
GP-COMP-Q	1 Qt.

Leaf-Tek® Plant Leaf Cleaner



Ready-to-Use

Safe for all live plants including delicate ferns and palms. Leaf-Tek lifts and removes dirt and dust from the leaf and washes it away. Leaf-brite contains no mineral oil, allowing the plant to breath and absorb light. Spray on let dry.

Concentrate

Won't remove water and calcium spots.

Item	Description	Case
<u>Ready-to-Use</u>		
CLT-1RTU	1 Gal.	4
<u>Concentrate</u>		
CLT-1	1 Qt.	4

(New SUPER concentrated formula now fits in quart bottle!)

Silkbrite® Silk Plant Cleaner



Ready-to-Use

Hard-to-clean silk plant material is now easier to clean with Silkbrite. No mineral oil or sticky residue to attract dust. Alcohol-free Silkbrite will not cause dyes to run. Spray and let dry.

Concentrate

Item	Description	Case
<u>Ready-to-Use</u>		
CSB22	16 oz.	12
CSB-1RTU	1 Gal.	4
<u>Concentrate</u>		
CSB-1	1 Qt.	4

(New SUPER concentrated formula now fits in quart bottle!)

Primescape Products Citrus Formula



A unique blend of natural ingredients that will provide the results you need. When it comes to cleaning plants, results count and this is precisely why this product is for you! Out shine your competition with clean and healthy plants. Avoid contact with etched glass.

Item	Description	Case
C-CIT-QT	1 Qt.	4
C-CIT-GAL	1 Gal.	4

In-stock orders will be shipped within a 24 hour time frame.



800-872-4361

www.primescapeproducts.com

"SE HABLA ESPAÑOL"

Fertilizers, Cleaners, & Pest Control

PLEASE REFER TO OUR WEBSITE FOR LABELS & MSDS SHEETS

Pixie Sparkle Leaf Shine & Cleaner

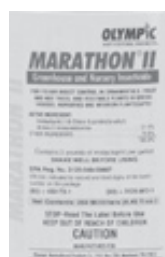


Concentrate

Item	Size	Case
CPS-1	1 Gal.	4

Ready-To-Use (limited availability)

Item	Size	Case
CPS-1RTU	1 Gal.	4



Marathon II

For foliar and systemic insect control in turfgrass, landscape ornamentals and interior plantscape. Eliminates virtually all major pests with the exception of spider mites. Excellent drench for fungus gnat treatment.

Item	Description
C-MARA-II	250 ML

Talstar® F



Broad insect control and a true miticide. Low odor, no residue, and is non-irritating. Active ingredient is bifenthrin.

Item	Description	Case
C-TS-QT	1 Qt.	1



800-872-4361

www.primescapeproducts.com

"SE HABLA ESPAÑOL"

Fertilizers, Cleaners, & Pest Control

PLEASE REFER TO OUR WEBSITE FOR LABELS & MSDS SHEETS

Merit® 75 W P Insecticide

For foliar and systemic insect control in turfgrass, landscape ornamentals and interior plants. Eliminates virtually all major pests with the exception of spider mites.

Item _____

C-MT-75W P

Merit® 0.5G Insecticide

A granular interiorscape pesticide, the 0.5 G version of Merit allows direct application to soil without any pre-dilution. Just sprinkle on and water as usual.

Item _____ Case _____

Ready-To-Use

C-MT-0.5G 30lb. Bag



Safer® Insecticidal Soap/Insect Killer

Effective against aphids, mealy bugs, mites, and other common pests. Biodegradable. Convenient ready-to-use form.

Item _____ Description _____ Case _____

CS-IS

Safari 20 SG

This "super-systemic" product is a superb insecticide covering a broad spectrum of interiorscape pests including fungus gnats (larvae), mealybug, scale, aphids, whitefly and thrips. Safari is super-flexible when it comes to application methods as it has contact, systemic and translaminar properties. It can be applied as a drench, spray or spray. Highly soluble in water, making it more effective in systemic uptake. Safari also has a long residual, making it an excellent choice for fungus gnat control at the larval stage.

Item _____ Size _____
C-SAFARI-3 3 lb.

Gnatrol WDG

Newly-formulated Gnatrol WDG (Water Dispersible Granule) is a highly-selective biological larvicide used to control fungus gnat larvae. It is more highly concentrated, convenient to use, and has an extended shelf-life of 2 years. Labeled for use in interiorscapes and is OMRI listed. When fungus gnat larvae consume the active ingredient (Bt) they become paralyzed, stop feeding, and die before becoming adults. Gnatrol WDG is best used preventatively.

Item _____ Size _____
C-GNATROL-5 16 lb.

Yellow Monitoring Cards

Sticky surface traps flying insects such as white flies and fungus gnats for monitoring of pesticide effectiveness. **Must order in multiples of 50 cards!**

Item _____ Case _____
C-MC-YW 50



800-872-4361

www.primescapeproducts.com

"SE HABLA ESPAÑOL"



800-872-4361

www.primescapeproducts.com

Planter Tech Sub-Irrigation



Three year warranty for defects in material, limited only to parts that do not fall under standard regular maintenance for the planter. Does not apply to misuse, abuse, accident, etc. Replacement of units or parts does not extend the warranty beyond its initial period.

Achieve a perfect balance of moisture and oxygen levels in your soil at all times with Planter Technology's container irrigation systems. Primescape offers the perfect unit for any planter. Give us a call today to learn more about what sub-irrigation can do for you!



CWC® Classic Container Irrigation System INDOOR/OUTDOOR

Item	Shape	Outside Dia. Top/Bottom	Inside Dia. Top/Bottom	Overall Height	Inside Height	Water Capacity
CWC-R1100	Tapered Square	12"/10.5"	11"/9"	13.5"	12.5"	2 Gal.
CWC-R1500	Tapered Square	17"/10"	15.5"/8.5"	17"	15"	3 Gal.
CWC-R1850	Tapered Square	20.5"/15.5"	18"/13"	19"	17"	5 Gal.
CWC-1300	Tapered Round	14.5"/8"	13"/7.5"	12.5"	11"	1.2 Gal.
CWC-1500	Tapered Round	16.5"/10.5"	15"/8.5"	15"	13.5"	2.25 Gal.
CWC-1800	Tapered Round	20.75"/14.5"	18"/11.5"	19"	17"	6 Gal.
CWC-2100	Tapered Round	23.25"/13"	20.5"/12"	21.5"	19"	9 Gal.
CWC-2400	Tapered Round	26"/15"	24"/13"	21"	18.75"	8 Gal.
CWC-2500	Tapered Round	27.25"/17.5"	24.5"/15"	25"	22.5"	12.8 Gal.
CWC-2800	Tapered Round	31"/19"	28.5"/17"	30"	28"	15 Gal.
CWC-3300	Tapered Round	35"/23"	32"/21"	27"	34"	12 Gal.



CWF® Flower Bowl INDOOR/OUTDOOR

Item	Outside Diameter	Outside Height	Inside Diameter	Inside Height	Water Capacity	Empty Weight
CWF-1706	17"	6.5"	15.25"	5.5"	1.2 Gal.	2.5 lbs.
CWF-2107	21"	7.5"	19.25"	6.5"	2 Gal.	4 lbs.
CWF-2508	25"	8.25"	23.25"	7.25"	3 Gal.	5 lbs.
CWF-2909	29"	9.25"	27"	8.25"	4 Gal.	7 lbs.
CWF-3410	34"	10.5"	32"	9.25"	5.5 Gal.	10 lbs.

Lead times for CWC & CWF units vary from three days to three weeks. Call your Primescape representative for more details.



In-stock CWI units ship within 24 hours. Lead times for CWM units vary from three days to three weeks. Call your Primescape representative for more details.



CWI® Container Irrigation System INDOOR or OUTDOOR

Indoor Item No.	Outdoor Item No.	Outside Dia. Top/Bottom	Inside Diameter	Overall Height	Inside Height	Water Capacity
PT-600		6.5"/5.25"	5.75"	6"	5"	1.75 Pints
PT-750	PT-750X	8.75"/7.5"	6"	6"	5.5"	.4 Gal.
PT-800	PT-800X	9.12"/8.75"	7.5"	7"	6.5"	.6 Gal.
PT-1000	PT-1000X	11.25"/9.5"	9.5"	10"	8.75"	1 Gal.
PT-1200	PT-1200X	12.5"/10.5"	11"	11"	9.5"	1.5 Gal.
PT-1400	PT-1400X	15.75"/13.5"	14"	14"	12.75"	2 Gal.
PT-1650	PT-1650X	18"/16"	16"	16.5"	15.25"	4 Gal.
PT-1700	PT-1700X	18"/17"	17"	18"	17"	4.5 Gal.
PT-2200	PT-2200X	23.25"/21"	21.25"	19.75"	18"	8 Gal.



CWM® Modular Irrigation System (custom-fit container links)

For odd-shaped or oversized plant beds, Primescape proudly offers many CWM® Modular options. Planter Technology has devised a unique system that combines all the benefits of their other units with the flexibility of modular engineering. Call Primescape today for a consultation.

In-stock orders will be shipped within a 24 hour time frame.



800-872-4361

www.primescapeproducts.com

"SE HABLA ESPAÑOL"

Sub-Irrigation Accessories



Funnel



Ideal for filling reservoirs.

Item	Size
PT-FUN6	6"

Rubber Stoppers

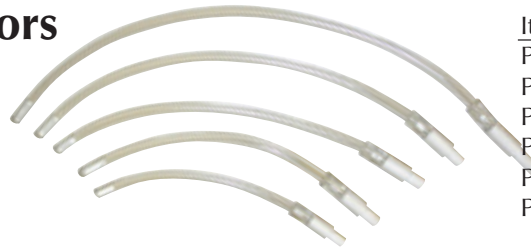


For plugging the fill port of all Planter Technology units.

Item
PT-STP

Replacement Moisture Sensors

For use in all Planter Technology units.
Contact your Primescape representative for more information on which sensor is right for your container.

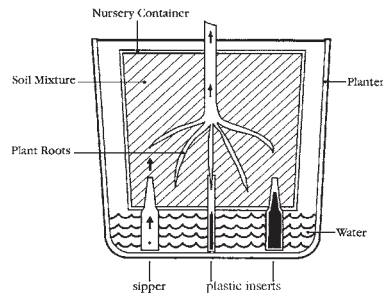


Item
PT-SENSOR10
PT-SENSOR12
PT-SENSOR14
PT-SENSOR16
PT-SENSOR17
PT-SENSOR22

Sippers

Excellent for poinsettias and other plants that don't like over-saturated roots.

Keep blooming plants alive longer



Item	Set Pack	Case Pack
SIP-300		100 pcs. (25 sippers, 75 legs)

Bio-Barrier Root Control System



Prevents roots from clogging inlet holes.
Long-lasting material won't wear out, break down, or decompose. Especially important for aggressive rooted plants: Ficus benjamina, Rhaps Palm, etc.

Item	Case Pack
PT-BGP	25



800-872-4361

www.primescapeproducts.com

"SE HABLA ESPAÑOL"



800-872-4361

www.primescapeproducts.com

"SE HABLA ESPAÑOL"

Heavy-Duty Sprayer

DRAMM

DRAMM Heavy-Duty Sprayer



A hydraulic sprayer with adjustable pressure up to 500 PSI, from a 20-foot stream to an 8-foot diameter mist. 33-foot discharge hose. For application of pesticides, wetting agents, and cleaning solutions. Comes complete with an 18-inch wide rugged aluminum cart and adjustable trigger gun. Other hose lengths available.

20 Gallon Tank!



**Does not come with hose reel.*

Item
MS20-33

DRAMM Watering Tools

DRAMM Water Breaker-Cyclolac Plastic



Ideal for watering large planting beds. Apply a large volume of water evenly. Simply attach to hose or shut-off valve

Item
H-DWB

DRAMM Plastic Shut-Off Valve



Designed to withstand higher water pressures. Fingertip water control. Durable plastic construction.

Item
H-DV

DRAMM Brass Shut-Off Valve



Fingertip water control. Brass construction.

Item
H-DBV

DRAMM 36" Long Handi-Reach Handle



The Handi-Reach is designed to eliminate the stretching and stooping associated with hand watering. Constructed of hard drawn aluminum with brass couplings and plastic hand grip.

Item
H-DH

In-stock orders will be shipped within a 24 hour time frame.



800-872-4361

www.primescapeproducts.com

"SE HABLA ESPAÑOL"

Watering Machines

AQUA Mate™
Portable Water Delivery System

*Each Aquamate comes complete with a wand valve, multiple spray heads, two watering tubes, utility bag, and a maintenance kit. Two-year warranty on tank and one year warranty on all parts.**



	Item	Width	Depth	Height	Water Capacity	Empty	Full
* W-2 and W-3 offer an adjustable 8"-10" of additional handle height	*W-2	18.13"	6.5"	34.5"	8-10 Gal.	42 lbs.	118 lbs.
	*W-3	18.5"	17"	42"	12-14 Gal.	50 lbs.	160 lbs.
	W-4	25.38"	24"	40"	20-22 Gal.	95 lbs.	290 lbs.
	W-5	28.13"	32"	47"	28-30 Gal.	125 lbs.	370 lbs.
	W-6	28.13"	32"	54"	40-44 Gal.	145 lbs.	500 lbs.

Warranty excludes physical damage and malfunctions resulting from freezing.

Plant Food Filler

Item	Description
W-PFF	20 oz.. For models 2 & 3
W-PFFL	40 oz.. For models 4, 5, & 6

Wand Valves

Item	Description
W-WV	Chrome plated wand valve w/ socket
W-BWV	Premium Wand Valve
W-BA	Ball Valve Assembly

Wand Tubes

Item	Description
W-SWT1	Standard Wand Tube - 12"
W-SWT2	Standard Wand Tube - 24"
W-SWT3	Standard Wand Tube - 36"
W-BWT1	Basket Wand Tube - 12"
W-BWT2	Basket Wand Tube - 24"
W-BWT3	Basket Wand Tube - 36"

Watering Heads

Item	Description
W-BH	For general watering
W-SH	For large bed areas or leaf cleaning
W-MH	For misting, apply pesticides, leaf shine

Faucet Adapter

Item	Description
W-TFA	Use with kitchen / bath faucets



Trays & Trash Bags

Item	Description
W-RDTRAY	Round Tray
W-TRR	Round Tray Rack
W-SQTRAY	Square Tray
W-SQRACK	Square Tray Rack
W-TB-G	Trash Bag (W-2 & W-3)
W-TBL-G	Trash Bag (Large) (W-4, -5, & -6)

Casters

Item	Description
W-CST4	4" Caster for W-2 and W-3 Units
W-CST5	5" Caster for W-4 and W-5 Units
W-CST6	6" Caster for W-6 Unit

In-stock orders will be shipped within a 24 hour time frame.



800-872-4361

www.primescapeproducts.com

"SE HABLA ESPAÑOL"

Watering Machines



Three-year warranty on tank and one year warranty on hoses, wheels & frame. Three month warranty on wands, valves, and nozzles.* Tank wraps come in choice of three colors: NAVY BLUE, FOREST GREEN, and JET BLACK.

* Warranty excludes physical damage and malfunctions resulting from extreme weather and temperatures. 120°F max. temp on all units except WBM-16HT.



NEW

WBF-12 Mini **12-Gallon Fiberglass** (11-12 gallons of useable water)

- Depth/Width/Height 20" x 20" x 36"
- Tank size: 16 gallons
- Empty weight: 45 lbs.
- Filled weight: 136 lbs.
- 12' SuperFlex hose w/ shut off valve
- Filling time: 3 Min.
- 2 - 8" medium-duty wheels
- 3 - 3" casters, 3rd front anti-tip caster
- Easy metal loading wheels/handle
- Rubber hand grips
- Sink-to-hose adapter
- Deluxe wand w/ no drip tip
- Tank wrap (choice of 3 colors)
- 13-qt. trash bag w/ 3 pockets and Rubbermaid waterproof liner
- Storage box with lid
- Drip cup with large sponge



WBF-20 **20-Gallon Fiberglass** (19-20 gallons of useable water)

- Depth/Width/Height 26" x 20" x 42"
- Tank size: 22 gallons
- Empty weight: 55 lbs.
- Filled weight: 212 lbs.
- 12' SuperFlex hose w/ shut off valve
- Filling time: 4 Min.
- 2 - 8" medium-duty wheels
- 3 - 3" casters, 3rd front anti-tip caster
- Easy metal loading wheels/handle
- Rubber hand grips
- Sink-to-hose adapter
- Deluxe wand w/ no drip tip
- Tank wrap (choice of 3 colors)
- 13-qt. trash bag w/ 3 pockets and Rubbermaid waterproof liner
- Storage box with lid
- Drip cup with large sponge



NEW

WBF-40 High-Volume! **40-Gallon Fiberglass** (38-40 gallons of useable water)

- Depth/Width/Height 32" x 23" x 48"
- Tank size: 50 gallons
- Empty weight: 90 lbs.
- Filled weight: 405 lbs.
- 12' SuperFlex hose w/ shut off valve
- 9' Quick-Dump hose w/ shut off valve
- Filling time: 8 Min.
- 2 - 10" heavy-duty wheels
- 3 - 4" casters, 3rd front anti-tip caster
- Easy metal loading wheels/handle
- Rubber hand grips
- Sink-to-hose adapter
- Deluxe wand w/ no drip tip
- Tank wrap (choice of 3 colors)
- 13-qt. trash bag w/ 3 pockets and Rubbermaid waterproof liner
- Storage box with lid
- Drip cup with large sponge



NEW

****High-Temperature!** **WBM-16 HT** **16-Gallon Metal** (14-16 gallons of useable water)

- Depth/Width/Height 20" x 20" x 42"
- Tank size: 20 gallons
- Empty weight: 55 lbs.
- Filled weight: 179 lbs.
- 12' SuperFlex hose w/ shut off valve
- Filling time: 4 Min.
- 2 - 8" medium-duty wheels
- 2 - 3" casters
- Storage box (no lid)

FREE UPGRADE FOR 2009:

- Metal loading handle
- Loading Wheels on handle
- 3rd anti-tip caster
- Storage box lid

**For use in hot climates where tank is exposed to hot sun. Max temp 240°F.

Looking to upgrade your Waterboy?
Buy these accessories with your machine and save!



WB-117U[†]

28-qt. Deluxe trash bag with 13 pockets and liner



WB-116U[†]

20' Recoil hose with shut-off Valve



WB-101U[†]

Super-duty wheel assembly upgrade

[†]These discounted parts are only available with the purchase of a fiberglass or metal Waterboy unit. If you need to purchase these for an existing Waterboy machine, please refer to the accessories list on p. 27.



800-872-4361

www.primescapeproducts.com

Watering Machines



METAL SERIES

Three-year warranty on tank and one year warranty on hoses, wheels & frame. Three month warranty on wands, valves, and nozzles.* Comes in three sleeve colors: NAVY BLUE, FOREST GREEN, and JET BLACK.

* Warranty excludes physical damage and malfunctions resulting from extreme weather and temperatures. 120°F max. temp on all units except WBM-16HT.



NEW

WBM-11 SE Super Economy (10-11 gallons of useable water)

- Depth/Width/Height 24" x 20" x 38"
- Tank size: 14 gallons
- Empty weight: 46 lbs.
- Filled weight: 129 lbs.
- Filling time: 3-4 Min.
- 12' SuperFlex hose w/ shut off valve
- Storage box with no lid
- Sink-to-hose adapter
- Deluxe wand w/ no-drip tip
- 2 - 8" wheels
- 1 - 3" casters

Optional Features:

- 13-qt. trash bag w/ three pockets and Rubbermaid waterproof liner
- Storage box lid



WBM-11

(10-11 gallons of useable water)

- Depth/Width/Height 20" x 20" x 36"
- Tank size: 14 gallons
- Empty weight: 49 lbs.
- Filled weight: 132 lbs.
- Filling time: 3-4 Min.
- 12' SuperFlex hose w/ shut off valve
- Storage box with no lid
- Deluxe wand w/ extendo-flex no-drip tip
- 2 - 8" rear wheels
- 2 - 3" casters
- Sink to hose adapter
- Rubber grips on handlebars

Optional Features:

- 13-qt. trash bag w/ three pockets and Rubbermaid waterproof liner
- Storage box lid
- Loading wheels on handlebars
- Metal loading handle
- 3rd anti-tip caster



WBM-16

(15-16 gallons of useable water)

- Depth/Width/Height 20" x 20" x 42"
- Tank size: 20 gallons
- Empty weight: 55 lbs.
- Filled weight: 179 lbs.
- Filling time: 4-5 Min.
- 12' SuperFlex hose w/ shut off valve
- Storage box with no lid
- Deluxe wand w/ extendo-flex no-drip tip
- 2 - 8" rear wheels
- 2 - 3" casters
- Sink to hose adapter
- Rubber grips on handlebars

Optional Features:

- 13-qt. trash bag w/ three pockets and Rubbermaid waterproof liner
- Storage box lid
- Loading wheels on handlebars
- Metal loading handle
- 3rd anti-tip caster



WBM-25

(24-25 gallons of useable water)

- Depth/Width/Height 31" x 23" x 43"
- Tank size: 32 gallons
- Empty weight: 75 lbs.
- Filled weight: 274 lbs.
- Filling time: 7-8 Min.
- 12' SuperFlex hose w/ shut off valve
- Work box with no lid
- Deluxe wand w/ extendo-flex no-drip tip
- 2 - 8" rear wheels
- 2 - 4" casters
- Sink to hose adapter
- Rubber grips on handlebars

Optional Features:

- 13-qt. trash bag w/ three pockets and Rubbermaid waterproof liner
- Storage box lid
- Loading wheels on handlebars
- Metal loading handle

UTILITY SERIES



UCWB-11

(10-11 gallons of useable water)

- Depth/Width/Height 39" x 18" x 33"
- Tank size: 14 gallons
- Empty weight: 50 lbs.
- Filled weight: 133 lbs.
- Filling time: 3-4 Min.
- 12' SuperFlex hose w/ shut off valve
- Sink-to-hose adapter & utility tray
- 13-qt. trash bag w/ liner
- 4 - 5" swivel casters
- Deluxe wand w/ no-drip tip



UCWB-14

(14-16 gallons of useable water)

- Depth/Width/Height 39" x 18" x 33"
- Tank size: 20 gallons
- Empty weight: 65 lbs.
- Filled weight: 181 lbs.
- Filling time: 4-5 Min.
- 12' SuperFlex hose w/ shut off valve
- Sink-to-hose adapter & utility tray
- 13-qt. trash bag w/ liner
- 4 - 5" swivel casters
- Deluxe wand w/ no-drip tip



UCWB-18

(16-18 gallons of useable water)

- Depth/Width/Height 45" x 26" x 33"
- Tank size: 23 gallons
- Empty weight: 67 lbs.
- Filled weight: 200 lbs.
- Filling time: 5-6 Min.
- 12' SuperFlex hose w/ shut off valve
- Sink-to-hose adapter & utility tray
- 13-qt. trash bag w/ liner
- 4 - 5" swivel casters
- Deluxe wand w/ no-drip tip



800-872-4361

www.primescapeproducts.com

"SE HABLA ESPAÑOL"

Watering Machines



* The 14" wagon wheel is discontinued.
WB101 includes (2) 10" wheels and a
kit that retro-fits them to older machines



Additional Spare Parts:

Item	Description	Item	Description
WB-101	14" Wagon Wheel Conversion Kit The 14" wheel no longer exists! To retrofit (2) 8" wheels onto an older machine, this kit is required! A 10" wheel kit is available for an added fee.	WB-117	28-qt. Deluxe Trash Bag w/ 13 pockets only (not pictured)
WB-102	Kaddy Clip on Front Bag	WB-117A	28-qt. Deluxe Trash Bag w/ 13 pockets w/Liner
WB-103	12" Superflex Hose w/ Shut Off Valve	WB-118	Large Sponge w/Drip Cup
WB-104	Shut off Flow Control Valve	WB-119	Rubber Hand Grips
WB-105	Watering Can Holder w/2 Sponges	WB-120	Loading Wheels (Set of 2)
WB-106	Thumb Valve	WB-121	CWI Adapter
WB-107	16" Dramm Wand	WB-122	Infuser Tube
WB-108	4.5" Extendo Flex No-Drip-Tip	WB-123	Squeeze & Pour Bottle
WB-109	EZ Load Slide Bar	WB-124	Steel Loading Handle
WB-110	Storage Box with lid	WB-125	3rd Front Wheel 3" Caster
WB-110A	Storage Box with no lid	WB-125A	3rd Front Wheel 4" Caster
WB-110B	Storage Box lid	WB-126	Medium Duty 8" Wheel
WB-111	F-12 Mini Tank Wrap	WB-126A	Heavy Duty 10" Wheel
WB-112	F-20 Tank Wrap	WB-127	Complete Deluxe Wand
WB-112A	M-25 Tank Wrap (not pictured)	WB-128	Sink to Hose Adapter
WB-113	F-40 Tank Wrap	WB-129	Deluxe Wand for Atomizer
WB-114	25' Straight Hose w/Shut Off Valve	WB-130	Atomizing Tips (not pictured)
WB-115	Quick Dump Hose w/ Shut Off Valve	WB-131	Bungee Strap
WB-116	20' Recoil Hose w/Shut Off Valve	WB-132	13-qt. Trash Bag w/ 3 pockets only (not pictured)
		WB-132A	13-qt. Trash Bag w/ 3 pockets w/ Liner
		WB-133	Reverse-osmosis filling pump for low-pressure systems



800-872-4361

www.primescapeproducts.com

Flowering Tree Frames

*Holiday
Splendor*

Celebrate the holidays with a beautiful poinsettia tree!

Speed Covers

Item #	Size	Case
BSC4-	4"	400
BSC6-	6"	250
BSC65-	6.5"	250
BSC8-	8"	150
BSC10-	10"	150



Celebration (05)
reflective pattern



Brite
Gold
(01)



True
Red
(03)



Silver
(02)



Moss
(04)



Black Watertight Liner

Item #	Top I.D.	Bott I.D.	Case
WPH-7	7.5"	5.5"	76

Primescape Products Order Form

Bill to: _____

Email: _____

Phone #: _____

PO #: _____

Ship to: _____

Fax #: _____

Ordered By: _____

Item	Each Qty.	Color/Finish/Description
1.		
2.		
3.		
4.		
5.		
6.		
7.		
8.		
9.		
10.		
11.		

All products will ship standard ground service unless special arrangements are requested in writing below.

Comments: _____

Order Confirmation faxed or emailed within one business day.

PH: 800-872-4361 • Fax: 847-634-4126 • Email:

Primescape Products Co.
2050 Clearwater Dr. • Des Plaines, IL • 60018-1916
Phone : 800.872.4361 • Fax : 847.634.4126
www.primescapeproducts.com