



**Primescape
Products**



2009/2010 Industry Supply Catalog



Phone: 800-872-4361 • Fax: 847-634-4126

Terms and Conditions

Orders can be placed by mail, phone, fax, or email using the following information:

Primescape Products Co.
485 East Half Day Road, Suite 450
Buffalo Grove, IL 60089-8809

Toll Free: 800-872-4361 • Local phone: 847-634-4125 • Fax: 847-634-4126 • www.primescapeproducts.com

***All orders are subject to a \$50 minimum.
(orders processed at below this minimum will be subject to a \$25 fee)***

Pricing and Specifications: Primescape prices are for wholesale distributors only.

All prices reflect buyers' net cost in US currency and do not include freight, federal, state and local taxes, or any necessary specialty packaging charges. Buyer shall pay all such charges. Prices, finishes, and product specifications are subject to change without notice.

Payment Terms:

Advance Pay- Acceptable forms of payment include Cashier's Check, Money Order, Visa/Master Card, American Express, Discover Card, or Wire Transfer

Cash on Delivery- COD shipments will be paid by check at time of delivery. MAKE CHECKS PAYABLE TO PRIMESCAPE PRODUCTS Company. COD orders are subject to carrier service charges.

Open Accounts- Terms are Net 30 days after shipment and are extended to firms that have established credit with Primescape Products. We reserve the right to place customers in COD/Advance pay status if an account becomes inactive through non-use, or if an account fails to meet the above terms. Applications for an open account are available at www.primescapeproducts.com or by calling us.

Order Deposit- Orders for custom product or for quantities in excess of normal stock levels are subject to an advance deposit of 50% of the order total.

Resale Tax Certificate - Accounts who furnish a resale tax certificate will not be taxed on any orders. Please specify if you are ordering supplies for non-resale and would like to be taxed. Once a resale tax certificate is submitted Primescape is not responsible for determining resale status of items ordered.

International Shipments (excluding Canada) - Payment terms on International shipments is full payment in advance by wire transfer. Information for completing the wire transfer will be provided by your sales representative when you place your order. Cashiers check or money orders will also be accepted for international shipments only if the funds are drawn against a U.S. Bank. In no instance will Primescape Products pre-pay the freight charges to a carrier of your choice and add it to your invoice. **All payments must be in U.S. Dollars.**

*Condiciones de pago para envíos internacionales (excluyendo a Canadá) - Los pedidos internacionales deben de cancelar monto completo vía transferencia bancaria. Su representante le proporcionara la información necesaria para hacer el pago cuando su pedido este completo. Cheques certificados o giro postal serán aceptados solamente cuando los fondos son emitidos de un banco de los Estados Unidos. En ningún instancia, Primescape Products pagará por adelantado el flete de envío ni puede agregar estos costos a su factura. **Todos pagos tienen que ser en dólares Americanos.***

Inventory: We have an extensive inventory and we work very hard at ensuring that product is available for our customers as orders are placed. However, we will have times when certain products may not be readily available. The buyer will be notified of out-of-stock situations, along with an availability estimate for the product at the time of order in most instances. In addition, our customer service reps will advise the buyer of alternative products when out-of-stock situations occur.

Shipping policy: All product is shipped as FOB Origin. Unless otherwise requested by buyer, product will be shipped via carriers of our choice with shipping/handling, insurance, or additional packaging charges prepaid and added to the invoice. Primescape typically ships stock orders within 24 hours of receipt of order. A second invoice may be issued if charges related to residential or lift-gate service are required at time of delivery. If a specific shipping date is an important consideration, please call customer service to confirm product availability and shipping information.

Shipping Damage or Shortages:

Our products are thoroughly inspected prior to shipping and we go to great lengths to ensure that our products are sufficiently packaged. Unfortunately, damages during shipping do occasionally occur. We encourage you to inspect all packages before signing to accept the shipment. Please take the following steps to ensure the carrier's liability in the event of a damaged shipment:

- Count all cartons, noting any discrepancies.
- Inspect carton exterior, noting any visible damage.
- Open cartons (in the presence of the driver) if you suspect that damage has occurred.
- If damage is found, note the nature and extent of damage on the bill of lading or freight bill when signing to accept shipment or simply refuse to accept the damaged box noting that the box is being refused due to damage.

Occasionally damages are not discovered until after the driver has already left. In the event that a "concealed damage" is discovered, please contact Primescape Products at 847-634-4125 immediately so that we may replace the damaged merchandise to you and file a claim with the carrier.

Primescape Products must be notified within 5 days of receipt of damaged merchandise. Failure to notify Primescape of any damages within 5 days of receipt of merchandise may affect our ability to replace this merchandise at no charge due to time constraints of filing damage claims with our carriers.

Return Policy: No merchandise may be returned without our advance written consent. *All authorized returns are subject to a restocking charge of \$25 or 20% net invoice, whichever is greater. In addition, all related transportation costs are to be borne by the purchaser.* Authorized returns must be received in saleable condition, without exception. Credit will be withheld if merchandise is not saleable. Returns cannot be authorized after 30 days from date of the original shipment. Unauthorized returns will be refused. Only stock items are returnable.

Table Of Contents

Planter Accessories

Hanging Planter Accessories 4

Soil

PrimeMix 532 Soil..... 4

Installation Materials

Poly Pebbles..... 5

Fresh Spanish Moss 5

Excelsior Spanish Moss..... 5

Moss Collars..... 5

Moss Rolls..... 5

Moss Cords 5

Pro Toast..... 5

Capillary Wicks and Matting 6

Wick Puller 6

Cork Pads 6

Plant Pallets..... 6

Surface Savers 6

FleurAmi Flexi-Liners 7

Deep Basket Liners..... 7

Shallow Vinyl Saucers..... 7

Container Sealant..... 7

Primescape Vinyl Liners..... 8

Eco-Spacer (Foam Collar for Top Dressing)..... 8

Grow Pot Steps (Styro Lifters) 8

Landscape Fabric..... 8

OASIS™ Floral Foam Disk..... 8

AquaFur 8

Professional Interior Landscape Tools

Soil Probes 9

Plant Paws (Large, Medium & Tips) 9

Pocket Sweep 9

Junior Flip-Up Feather Duster..... 10

Primescape 2.5 Gal. Watering Can..... 10

Watering Can Apron (for 2.5 Gal. Can) 10

DRAMM 7 Liter Watering Can 10

Hand-Held Magnifier 10

Twin-Neck Quart Bottle (empty)..... 10

Poly Pint & Gallon Bottle (empty)..... 10

G.E. Plantscape Light Meter 10

MOMET™ Moisture Meter..... 10

Poly Backed Throw/Drip Catcher..... 10

5-Gallon Pail 11

1/2 Gal. Hand Pump Compressed Air Sprayer... 11

1-Gal. Hand Pump Compressed Air Sprayer..... 11

Primescape Sprayer (24 oz.)..... 11

4' Tech Tube 11

Siphon Pump..... 11

Preferred Pruner 11

Folding Pruning Saw..... 11

6' & 10' Long-Reach Cut and Hold Pruner..... 11

12' Telescoping Pole Pruner 11

Felco® Pruners & Holster 12

Fiskars Pruners, Shears, Scissors 12

Fiskars Apron & Holster..... 13

Kaddy Belts, Pouches, Aprons, Pockets..... 13

Kaddy Bags & Totes 14

3-Pocket Waist Apron 14

Fertilizers

Psi Matrix Watering Regulating Surfactant..... 15

Hormex Liquid Concentrate (vitamins/hormones) .. 15

HM-10 Time-Release Fertilizer 15

Superthrive Plant Hormone 15

Primescape Liquid Tropical Fertilizer 15

Drum Pail Pump (for Primescape Fertilizer) 15

Pro-Tekt..... 15

Companion 2-3-2 Microbial Inoculant..... 16

Essential 1-0-1 Organic Soil Conditioner..... 16

18-3-6 Plant Food..... 16

Cleaners

Leaf-Tek® Plant Cleaner 16

Silkbrite® Silk Plant Cleaner..... 16

Primescape Citrus Formula (plant cleaner)..... 16

Maintenance One™ All-Purpose Cleaner 17

Foliglo Foliage Cleaner / Leaf Shine..... 17

Pixie Sparkle Leaf Shine / Cleaner 17

Pest Control

EcoEXEMPT IC² 17

Marathon II (for foliar and systemic insect control) 17

Talstar® F (insect control & miticide)..... 17

Whitmire® Research's X-Clude (Pyrethrium)..... 18

Whitmire® Yellow Monitoring Cards..... 18

Merit® 75 WSP Insecticide (Concentrate)..... 18

Merit® 0.5G Insecticide (Ready-To-Use) 18

Safer® Insecticidal Soap..... 18

Tree Mover

Gantry With Beam Lifters 18

Sub-Irrigation

MONA Tank Reservoirs 19

MONA Link Reservoirs..... 19

MONA Parts & Accessories 19

Planter Technology CWC® Series..... 20

Planter Technology CWF® Series 20

Planter Technology CWI® Series 20

Planter Technology CWM® Series 20

Funnels, Rubber Stoppers, Sensor Tubes 21

Bio-Barrier Root Control System..... 21

Sippers 21

Water-Tech Sub-Irrigation 21

Paramount Sub-Irrigation 21

Water Machines & Sprayers

Electrostatic Sprayer 22

DRAMM Heavy-Duty Sprayer 23

DRAMM Watering Tools..... 23

Aquamate Portable Water Delivery System..... 24

Waterboy F-Series 25

Waterboy M-Series & Utility Models 26

Waterboy Accessories..... 27

Holiday Splendor

Full or Half-Diameter Poinsettia Tree Frames.... 28

Tree Frame Accessories (liners and rings) 28

Highlander's® Speed Covers 28



800-872-4361

www.primescapeproducts.com

"SE HABLA ESPAÑOL"

Hanging Planter Accessories

Hanging baskets and bowls often require strong support. Primescape's hanging supplies are rugged enough to support a heavy plant, yet subtle enough not to detract from the overall interior landscape.

Stainless Steel Cable Assembly



Item	Description	Price
SC-40*	40" Long	\$ 7.02
SC-60*	60" Long	\$ 7.63
SC-XW	Collars & Screws (replacements only)	\$.93

Some assembly required; Holds up to 40 pounds! * includes set of collars & screws

Ceiling Clip



Item	Description	Price
CC-01	1" Track	\$ 1.44
CC-02	9/16" Track	\$ 1.44

Available Colors: White (-W), Chrome (-C)

Hand E Hite



Servicing hanging baskets is a breeze with this unique pulley system that allows you to lower baskets up to 6 ft. It also holds up to 40 lbs.

HEH \$9.83

Prime Mix 532 Soil

We've created a soil mix that has increased dimensional stability and subirrigation performance.

Prime Mix Blend 532



	Mixture
Components	Coconut Coir, Rice Hulls, Haydite
Application	Sub-Irrigation, General Planting, Specimen plantings and Interior/ Exterior plantings

Bag Size (Cu. Ft.)	2	60
Cost (per bag)	\$9.24	\$202.71
Item Code	P-Mix2	P-Mix60
Bags per Pallet	45	1
Bulk Density	22lbs per cu. ft. @ 49% moisture*	

Components

Minimum Order: 1 pallet

*SOIL MAY FREEZE DURING WINTER DELIVERIES - ALLOW TIME FOR THAWING

Coir (Ground coconut husks)

- Benefits:
- Unique water holding capacity
 - Good drainage/aeration
 - Less compaction than peat moss
 - Retains physical properties
 - Easier watability than peat
 - Ability to retain nutrients against leaching and buffers ongoing release
 - Natural and renewable resource
 - Uniform in composition

Coir readily absorbs water, re-wets far more easily than sedge peat - even when completely dry, thus reducing costs of wetting agents. Coir reduces watering frequency without plant stress, thus reducing labor cost and minimizing loss achieving better water conservation. Professional grower experience indicates that Coir is less favorable to fungus gnat populations. Coir supports your cultural efforts & helps minimize replacements.

Rice Hulls

Composted rice hulls have been used successfully in container media for at least 15 years. Rice hulls resist decomposition & compaction because of the naturally high silicon content in the hulls.

Haydite

- Benefits:
- Reduce compaction of soil
 - Increase soil porosity
 - Increase air space for healthier root development
 - Reduce labor cost through more efficient watering
 - Increases mix stability
 - Derived from natural shale deposits

Haydite's porous micro-surface texture and interior porous structure resist clogging and provides superior aeration that promotes growth of delicate, fine roots system. Problems of soil compaction are significantly reduced. The soil remains resilient because moisture and air movement are not restricted. Haydite absorbs water and nutrients allowing for less run off. Water and nutrients are held by each particle and are slowly released back into the soil and root zone, as needed, promoting healthier root growth.

In-stock orders will be shipped within a 24 hour time frame.

Poly Pebbles

Made from recycled plastic! Ideal as a top dressing for planted containers. Adds a designer look to your plant installation. Our Poly Pebbles look and feel just like stone, but weigh only a fraction of the real thing. Black is now also available in a new smaller-size!



Use discretion when installing in areas populated by small children.

Regular-Size Pebbles: High-density coverage equals 2 square feet per bag; Low-density coverage equals 4 square feet per bag.

Small Pebbles (available only in black) High-density coverage equals 6 sq. inches per bag; Low-density coverage equals 1 sq. ft. per bag.

*Denotes special availability



Item	Color	Unit	Price (ea.)	Case
POLY-WHT	White	Bag	\$20.99	5
POLY-TAN	Tan	Bag	\$20.99	5
POLY-GRY	Grey	Bag	\$20.99	5
*POLY-RED	Red Clay	Bag	\$17.99	5
POLY-BLK	Black	Bag	\$20.99	5
POLY-BLK-SM	Black	Bag	\$ 5.49	20

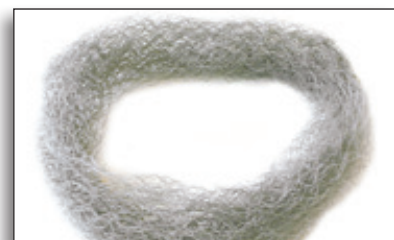


Moss Rolls

100% natural dormant moss (on nylon backing for easy cutting). Neither dried nor preserved, this moss will actually grow!

Green Tree color enhanced with natural, permanent dye.

Item	Color	Unit	Case	Price
MR-GT18	Green Tree	4' x 18' Sheet	1	\$ 138.69
MR-SP18	Spanish	4' x 18' Sheet	1	\$ 146.34
MR-GT4X2	Green Tree	2' x 4' Sheet (in bag)	6	\$ 18.36
MR-SP4X2	Spanish	2' x 4' Sheet (in bag)	6	\$ 19.38



Moss Cords

Synthetic strands of moss tied together for a fast and simple top dressing. Simply lay over soil and fluff. Fire retardant and reusable!

Item	Fits	Price
MC-68	6" to 8" pots	\$2.50
MC-1012	10" to 12" pots	\$3.79
MC-1416	14" to 16" pots	\$5.06
MC-1720	20" pots	\$6.25

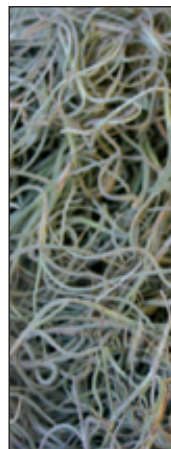


Pro Toast

Organic toasted hardwood great for interior/exterior use. Flame and decay resistant. If applied in 1" depth, one bag covers about 50 square feet.

Item	Unit	Pallet	Price
I-PT	50 lb. bag	25 bags	\$32.06

Now available in Dark or Medium
* be sure to indicate choice when ordering!



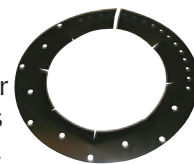
Fresh Spanish Moss

Air-dried, fumigated and free of twigs and leaves, Fresh Spanish Moss is shipped directly to you from Florida. Available in convenient 10 lb. bags and also in 25-lb. or 28-lb. boxes. Not fire-retardant. 25 lbs. will top-dress approximately (20) 16" decorative containers.

Item	Unit	Price
I-SM10	10 lb. bag	\$ 15.17
I-SM28	28 lb. box	\$ 39.78

Moss Collars (Round)

Makes moss easy! Adjust plastic collar to appropriate size, then attach moss using sturdy plastic ties (included). When it's time to switch out the plant, simply lift out the entire bed of moss in one shot!



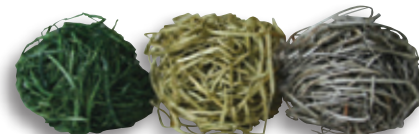
Item	Unit	Grow Pot	Fits	Price
MSC08	Single	6" to 8"	AS08,12	\$ 3.45
MSC08B	Box (50)	6" to 8"	AS08,12	\$ 144.69
MSC14	Single	8" to 10"	AS12,15	\$ 8.24
MSC14B	Box (50)	8" to 10"	AS12,15	\$ 345.35
MSC20	Single	10" to 14"	AS15,19	\$ 15.62
MSC20B	Box (50)	10" to 14"	AS15,19	\$ 480.48

Excelsior Spanish Moss

Eliminate problems with mold, mildew, odor and insects with this shaved-wood product. An excellent alternative to real Spanish moss.

For best freight order a minimum of 6 boxes!

Item	Unit	Price (-01)	Price (-02)	Price (-03)
I-SME	25lb. box	\$60.60	\$55.50	\$54.04
*I-SME-FR5	5 lb. box	n/a	n/a	\$28.11
*I-SME-FR	25lb. box	n/a	n/a	\$95.00



Forest Green (01) Sage (02) Natural (03)

* This product is intended for use in interior applications where combustion-modified chemicals applied to the fibers are not subject to removal by rain or other exposure. Only use I-SME-FR and I-SME-FR5 for base coverage of artificial foliage. Do not use I-SME-FR and I-SME-FR5 in live plant arrangements where watering will cause the product to lose its combustion-modified properties.

In-stock orders will be shipped within a 24 hour time frame.



Capillary Wicks & Matting

Ideal for sub-irrigating plant material in greenhouse and interiorscaping applications. This thick polyester material is strong and durable. The material is specially woven to provide optimum water retention.

Item	Length	Pot Size	Case	Each	Case
M-WDW12	12"	7"	100	\$.28	\$ 28.00
M-WDW18	18.5"	11"	100	\$.33	\$ 33.00
M-WDW22	22"	14"	100	\$.41	\$ 41.00
M-WDW26	26"	18"	100	\$.52	\$ 52.00
I-CMAT	25"	-	100	\$.67	\$ 67.00
*I-CROLL	50'x8"	-	4	\$32.74	\$130.96

*double the thickness of I-CMAT



Wick Puller

This handy tool is made of heavy duty 12-gauge steel and is perfect for pushing capillary wicks up into the root ball, by simply twisting the material around the curved head and pushing up through the drain holes, you can sub-irrigate any planting.

Item	Length	Each
M-WDWP	21"	\$1.94



Cork Pads



Made with a thin layer of cork and a durable layer of plastic, these pads provide protection while enhancing the appearance of your plantings. Water condensation is absorbed by the cork layer and kept from the floor surface by the water-proof plastic layer.

ROUND PADS

Item	Diam.	Each	Item	Diam.	Each	Item	Diam.	Each
CP04	4"	\$.88	CP11	11"	\$ 5.20	CP18	18"	\$13.05
CP05	5"	\$1.32	CP12	12"	\$ 5.94	CP19	19"	\$13.60
CP06	6"	\$1.76	CP13	13"	\$ 7.06	CP20	20"	\$16.13
CP07	7"	\$2.33	CP14	14"	\$ 8.21	CP22	22"	\$19.26
CP08	8"	\$2.72	CP15	15"	\$ 9.85	CP24	24"	\$22.56
CP09	9"	\$3.49	CP16	16"	\$10.16	CP26	26"	\$25.96
CP10	10"	\$4.50	CP17	17"	\$12.59	CP30	30"	\$41.34

Plant Pallets



Avoid moisture and mildew stains as well as other floor damage with the Plant Pallet. A heavy duty plastic disc with concentric weight-distributing legs which elevate the planter 1/2" above the surface, allowing for air movement. 400 lb. weight capacity.

Item	Diameter	Case	Each	Case
PP-12CL	8"	36	\$1.98	\$ 71.28
PP-13CL	9.5"	36	\$2.59	\$ 93.24
PP-14CL	12.5"	36	\$3.68	\$132.48
PP-15CL	15.5"	36	\$7.27	\$261.72

Surface Savers



These provide the ultimate in surface protection for floors, carpets, and furniture! These durable clear plastic ovals protect surface from water condensation and scratching. The unobtrusive feet allow for air circulation which promotes the evaporation of planter condensation. Especially made for use with heavy-weight objects.

Item	Size	Description	Case	Ea.	Cs.
SS06	6.5"	Fits 7-8" Planters	24	\$ 3.23	\$ 77.52
SS10	9.5"	Fits 10-12" Planters	24	\$ 6.93	\$166.32
SS12	11.5"	Fits 14-16" Planters	12	\$ 8.66	\$103.92
SS16	15.5"	Fits 20"+ Planters	12	\$14.31	\$171.72

Flexi-Liners from **fleur ami** by Hübecker

- Provides instant leak-prevention for any container
- Made from soft, flexible, high-quality plastic which *can be cut or bent as needed*
- Prevents calcium deposits on surface of planters; helps prevent excessive evaporation



SUPER-FLEXIBLE!
Fits any shape!



Item	Top Dia.	Bottom Dia.	Height	Units per Case	Each	Case (ea.)
16020	8.3"	6.3"	6.3"	25	\$ 4.00	\$ 3.20
10266	9.8"	7.1"	5.9"	25	\$ 4.50	\$ 3.60
10267	11.8"	8.3"	8.7"	25	\$ 5.50	\$ 4.40
10268	13.8"	9.4"	9.8"	50	\$ 6.50	\$ 5.20
10269	15.7"	11.0"	11.8"	50	\$ 7.00	\$ 5.60
10270	17.7"	12.6"	13.8"	50	\$ 8.00	\$ 6.40
10271	19.7"	14.2"	15.0"	50	\$ 9.00	\$ 7.20
16021	21.7"	16.9"	15.7"	50	\$10.50	\$ 8.40
10272	23.6"	17.3"	17.7"	25	\$12.00	\$ 9.60
16022	25.6"	20.9"	18.9"	25	\$18.00	\$14.40
10277	27.6"	21.2"	17.7"	25	\$27.00	\$21.60
16023	31.5"	27.6"	23.6"	25	\$34.00	\$27.20

Deep Basket Liners



Item	Top Dia.	Bottom Dia.	Height	Units per Sleeve	Sleeves Per Case	Each	Sleeve	Case
I-VBL04	4"	2 1/2"	2 3/8"	25	16	\$.13	\$ 3.25	400
I-VBL05	5"	3"	3 1/4"	25	16	\$.16	\$ 4.00	400
I-VBL06	6"	4 1/4"	3 1/4"	25	12	\$.21	\$ 5.25	300
I-VBL07	7"	5"	3 1/2"	25	12	\$.25	\$ 6.25	300
I-VBL08	8"	6"	3 1/2"	25	8	\$.33	\$ 8.25	200
I-VBL09	9"	7"	3 1/4"	25	8	\$.49	\$12.25	200
I-VBL10	10"	8"	3 3/4"	25	12	\$.55	\$13.75	300
I-VSD11	11"	8"	2 7/8"	25	4	\$.66	\$16.50	100
I-VSD12	12"	10 1/2"	3 1/4"	25	4	\$.84	\$21.00	100
I-VSD14	14"	12 1/2"	3 1/2"	25	4	\$1.09	\$27.25	100
I-VSD15	15"	13 1/2"	3 1/2"	25	4	\$1.31	\$32.75	100
I-VSD17	17"	15 1/2"	3 1/2"	10	10	\$1.46	\$14.60	100

Build up planter to the right height, drop in Flexi-Liner, and trim as needed!



Shallow Vinyl Saucers



Item	Top Dia.	Height	Units per Sleeve	Sleeves Per Case	Each	Sleeve	Case
I-VS04	4"	1.5"	25	40	\$.11	\$ 2.75	1000
I-VS05	5"	1.5"	25	40	\$.13	\$ 3.25	1000
I-VS06	6"	1.5"	25	40	\$.15	\$ 3.75	1000
I-VS07	7"	1.5"	25	40	\$.23	\$ 5.75	1000
I-VS08	8"	1.5"	25	24	\$.31	\$ 7.75	600
I-VS10	10"	1.5"	25	12	\$.45	\$11.25	300
I-VS12	12"	1.5"	10	20	\$.77	\$ 7.70	200
I-VS14	14"	1.5"	10	10	\$.93	\$ 9.30	100
I-VS17	17"	1.5"	5	20	\$1.44	\$ 7.20	100
I-VS21	21"	3"	5	5	\$4.03	\$20.15	25

Container Sealant



Clear plastic sealant used to make planters water-tight. Apply with a brush to seal ceramic, terra cotta, wood, fiberglass, metal, stone, or plastic planters. Leaves no shine.

Item	Coverage	Ea.
I-PP	1 gal. (covers 40 sq. ft.)	\$ 63.83

Be sure to use in a well ventilated area.



Primescape Vinyl Liners



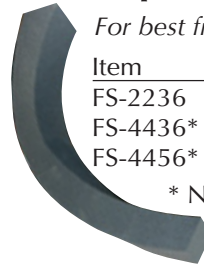
A quick, economical, and easy-to-use product for making a decorative container watertight. Unlike a vinyl or plastic saucer, this clear Vinyl Liner is pliable and will conform to the interior walls of a planter or planting bed. Ideal for use with wicker baskets!

Item	Diameter	Height	Case	Each	Case
I-L08	8"	6.5"	25	\$5.20	\$130.00
I-L10	11"	10"	25	\$6.06	\$151.50
I-L12	13"	12"	25	\$6.50	\$162.50
I-L14	15"	14"	25	\$6.93	\$173.25
I-L16	17.5"	15"	25	\$7.80	\$195.00
I-L18	18.5"	18"	25	\$8.23	\$205.75
I-L20	20"	20"	25	\$9.10	\$227.50
I-L22	24"	22"	25	\$9.53	\$238.25



Eco-Spacer (Foam Collar for Top-Dressings)

Made from bio-based soy bean oils, not petroleum! Adhesive-backing* adheres to most planter surfaces. The Eco-Spacer fills the gap between the grow pot and the edge of the planter, keeping your top dressing material from falling inside the container.



For best freight order a minimum of 4 cases!

Item	Size	Case	Ea.	Cs.
FS-2236	36x2x1.5"	144	\$2.23	\$321.12
FS-4436*	36x4x4"	25	\$5.86	\$146.50
FS-4456*	56x4x4"	40	\$7.28	\$291.12

* No Adhesive

Grow Pot Steps (styro lifters)

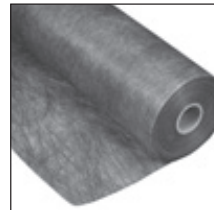


Raise plantings in decorative containers with this dense, lightweight foam block. Available as pre-cut blocks in 4 convenient sizes.

Item	Size	Thickness	Case	Each	Case
SL-0606S	6x6"	3/4"	528	\$.38	\$200.64
SL-0606L	6x6"	1.5"	256	\$.49	\$125.44
SL-0909S	9x9"	3/4"	256	\$.57	\$145.92
SL-0909L	9x9"	1.5"	96	\$.92	\$88.32

Landscape Fabric

Standard weight - 3.2 oz./sq. yd. 6' wide x 300' long roll (1800 sq. ft.). Use this fabric as a soil separator when creating a drainage fill layer, or a weed barrier over sub irrigation units.



Item	Ea.
I-LF3	\$158.80



AquaFür

AQ6 fits the WPH-7 Liner

New formula! 100% synthetic material (made from recycled soda bottles). Uses only 12-16 oz of water per cycle. Composition does not promote growth of mold or fungi. Longer-lasting *thinner* disc works consistently for over 12 months! Lasts 10 times longer than OASIS Discs! No wetting agent needed. Can be disinfected between uses by soaking in a mild bleach solution.

Item	Dia.	Ht.	Case	Ea.	Cs.
AQ5	5"	.375"	108	\$.77	\$83.16
AQ6	6"	.375"	96	\$.84	\$80.64
AQ8	7"	.375"	56	\$1.32	\$73.92

OASIS™ Floral Foam Disk



Irrigate blooming plants in watertight decorative containers with the OASIS™ Floral Foam Disk. Place in the bottom of a watertight container and add water to the top of disk. Plants absorb water from the OASIS™ Disk through holes in the bottom of the grow pot. Used successfully with both free-standing and in-ground blooming plant rotation programs.

Item	Dia.	Ht.	Case	Ea.	Cs.
OD4	4"	3/4"	420	\$.45	\$189.00
OD55	5.5"	1.125"	138	\$.57	\$78.66
OD7	7"	1.125"	103	\$.78	\$80.34

OD55 fits the WPH-7 Liner



800-872-4361

www.primescapeproducts.com

"SE HABLA ESPAÑOL"

Interior Landscape Tools



21" Soil Probe

Fabricated from top-quality steel tubing. Electroplated with copper, then chromed. Corrosion-resistant. Used to probe plant soil to obtain clean samples and determine moisture content at varying levels within a planting.

Item	Ea.
P21	\$56.84



30" Ultra-Probe Soil Sampler

Patented design allows for soil testing at 12 depths for planting beds. Steel construction.

Item	Ea.
P-UP	\$33.85



12" TerraProbe Sampler

Patented design allows for soil testing at 4 different depths for 6"-17" deep containers. Steel construction.

Item	Ea.
P-TP	\$16.23



12.5" Soil Sleuth

The Soil Sleuth is made of a high impact, sturdy acetal plastic. Avoid rust due to contact with soil, fertilizers or water. It gathers soil samples at 5 different levels, and with its rounded point does not harm plant roots.

Item	Ea.
P-SS	\$8.04



18.5" Probe-Rite Soil Probe

Finally a light-weight probe that won't break as easily as the plastic ones! This probe is made of aluminum and has a convenient hoop design that hooks right into a belt loop. 18 inches long with three notches.

Item	Ea.
P-PR	\$13.12

Mega Plant Paw Large



5.5" x 11"
Fits the hand like a mitten.

Item	Ea.
P-Mega-L	\$3.50

Plant Paw Tips



Plant Paw Tips cover fingers for easy cleaning of plants and other surfaces. Hand-washable/machine-dried.

Item	Ea.
P-Tip	\$1.43

Mini Plant Paw Medium



5" x 6" Fits around wrist when not in use.

Item	Ea.
P-Mini-M	\$1.85



Pocket Sweep

Cleans up spills and messes without cords, batteries or bags. Natural boar bristle brush sweeps up sand and soil.

(Must Order in packs of 3)

Item	Ea.
PSW	\$5.48

In-stock orders will be shipped within a 24 hour time frame.



800-872-4361

www.primescapeproducts.com

"SE HABLA ESPAÑOL"

Interior Landscape Tools



Junior Flip-Up Feather Duster

6" ostrich feathers retract into a durable plastic handle.

Item	Ea.
D-J	\$12.99

Primescape 2.5 Gal. Professional Watering Can



100% recyclable, and made from 50% recycled material! Dark brown seamless molded polyethylene construction. Designed for the interior landscape industry, features a large handle for good balance.

Item	Ea.
H2O	\$16.62

G.E. Plantscaper Light Meter



Professional quality 3-scale light meter accurately measures light intensity from 10 to 10,000 footcandles.

Item	Ea.
LM	\$90.10

Water Can Apron, Hunter Green



Wraps snugly around our 2.5 gallon professional watering can. A good alternative to a waist apron.

Item	Ea.
A-WC	\$29.68

Hand-Held Magnifier



Magnifies plant pests 10 times their actual size. Battery operated light illuminates viewing area immediately in front of the lens.

Item	Ea.
M-10x	\$16.40

DRAMM 7 Liter (1.8 Gal.) Watering Can



Smaller and lighter than the Primescape watering can. Molded plastic with large handle and long spout with removable nozzle. Stocked in Green only. 1.8 Gallons.

Item	Ea.
H2O-7L	\$25.03

Poly Pint Bottle

Empty poly pint bottle.

Item	Ea.
DX115	\$2.00 bottle
DX115a	\$.37 cap

Twin-Neck Qt. Bottle

Empty poly twin-neck bottle.

Item	Ea.
DX130	\$3.00 bottle
DX130a	\$.25 cap

BE SURE TO ORDER
2 CAPS PER BOTTLE!

Poly Gallon Bottle

Empty poly gallon bottle.

Item	Ea.
DX108	\$2.16 bottle
DX108a	\$.62 cap

Poly Backed Throw/Drip Catcher

Sized for easy handling with replacements in mind. 36"x30" poly backed absorbent pads are perfect for installers & techs. Protect surfaces from spills & plant shines. Grey/Black. **Sealed three per bag - must order in multiples of 3!**

Item	Ea.
PBT3630	\$11.56

*your price for a pack of three will be \$34.68



MOMET™ Moisture Meter

A revolutionary electronic meter designed to work on orchids and other potted plants in bark, moss or soil-based media. The MOMET™ Meter will use LED lights to tell you if your plant's potting media is wet, approaching dryness, or dry. Unit is 7.5" tall. Two AAA alkaline batteries are included.

Item	Ea.
MOM	\$35.25

In-stock orders will be shipped within a 24 hour time frame.



800-872-4361

www.primescapeproducts.com

"SE HABLA ESPAÑOL"

Interior Landscape Tools

1/2-Gal. Hand-Pump Compressed Air Sprayer



Half-gallon capacity hand-held sprayer features corrosion and impact resistant tank. Hand pump, with continuous on-off trigger action. High-density polyethylene construction.

Item	Ea.
SP-P	\$22.56



Primescape Sprayer

This hand-held 24 oz. bottle sprayer has an adjustable head for an array of spray intensities. Grade marks on side for easy, accurate filling. Great for misting plants or cleaning leaves.

Item	Ea.
SP-S	\$2.33 trigger & bottle
S-TS	\$1.12 trigger-only
DX117	\$1.89 bottle-only



1-Gal. Hand-Pump Compressed Air Sprayer

1-gallon capacity sprayer features corrosion and impact resistant tank. Hand pump, with continuous on-off trigger action. High-density polyethylene construction.

Item	Ea.
SP-K	\$54.25

Siphon Pump

Easy to use and convenient to carry, the Siphon Pump is the proper tool for removing excess water from plantings. Comes w/ 20" tube.



Item	Ea.
SI	\$26.69



4' Tech Tube

Our Tech Tube is clear blue plastic tubing. When attached to a standard faucet, allows water to flow into watering can.

Item	Ea.
H4T	\$2.08



NEW

5-Gallon Pail

White plastic pail ideal for filling bucket-related needs.

Item	Ea.
DX106	\$7.74 bucket
DX106a	\$3.43 lid

Folding Pruning Saw

Professionally prune specimen plants using this hand held tool. In use, a lock holds the blade in place. It folds into an unbreakable handle. 10 teeth per inch.



Item	Ea.
P-F18H	\$28.68



12' Telescoping Pole Pruner

Professional telescoping fiberglass handle pruner & trimmer. Extends 6'-12'. Teflon-S pruner cutting blades with 15' action pull rope with wood pull grip. 15" tempered steel pruning saw blade.

Item	Ea.
P-T	\$74.80

6' or 10' Long-Reach Cut-N-Hold Pruner **NEW**

Features built-in branch gripper to prevent clippings from falling when cut. One-piece handle. Ideal for pruning roses. P-C6 is adjustable from 4' to 7'. P-C10 is adjustable from 6' to 10'.



Item	Ea.
P-C6	\$112.33
P-C10	\$134.61



one side cuts



the other grips!



Handle locks for safety!

Preferred Pruner

A superior quality professional pruner. Field tested and recommended by leading landscaping firms as their pruner of choice. A great value.

Item	Ea.
P-PP	\$13.43



In-stock orders will be shipped within a 24 hour time frame.



800-872-4361

www.primescapeproducts.com

"SE HABLA ESPAÑOL"

Interior Landscape Tools



Felco Pruner Holster

Durable leather construction with metal clip for attaching to belt.



Item	Ea.
P-H	\$9.41



Felco Fitted Handle Pruner F-2

Recognized as the finest pruner made. This pruner features hardened steel blades and lightweight handles shaped for comfort. Replacement blades available.

Item	Ea.
P-FHR	\$53.17
P-FHL	\$53.17
P-RBR	\$12.27
P-RBL	\$12.27



Fiskars Soft-Touch Micro-Tip Scissors

Unique micro-tip for precise cutting in tight spaces. Easy-action spring gently opens blades. Smooth contoured handle for better comfort, and control. Precision-ground blades, and adjustable screw to modify tension. For left or right-handed use.



Item	Ea.
FIS-9921	\$17.08

Fiskars Scissors Sharpener



Simply run the scissors through the holes, squeezing the blades together. Easy and safe.

Item	Ea.
S-S	\$3.39

7" Fiskars Take-Apart Garden Scissors



These scissors are great for everyday trimming of foliage. Blue Handle

Item	Ea.
S-GS	\$11.59

8" Fiskars Scissors



Original molded orange comfort handle. Stainless steel 8" blades. Left & right available.

Item	Ea.
S-R	\$11.52
S-L	\$11.52



Fiskars UltraBlade

UltraBlade cuts with less effort, offers corrosion-resistance greater than that of stainless steel.

Item	Ea.
FIS-8109	\$18.87



9" Fiskars Pinking Shear

Ideal for ornamental trimming and detail work of tropical foliage. Orange handle.

Item	Ea.
S-PKS	\$22.04



Fiskars Pruning Stick

62" long

This lightweight yet rugged pruner allows you to prune at ground level while standing. Long enough to prune tall trees easily and safely.

Item	Ea.
P-9234	\$67.80

Fiskars Telescoping Pruning Stick

- Rotating cutting head
- Dual activated cutting
- Alum/fiberglass construction
- Adjustable saw blade angle
- 15" Saw blade attachment
- 1-1/4" cutting capacity
- Extends 8-13'

Item	Ea.
FIS-9240	\$113.57



800-872-4361

www.primescapeproducts.com

"SE HABLA ESPAÑOL"

Interior Landscape Tools



Your search for cost efficient technical aprons and pocket holsters is over with these durable Fiskars products.

Fiskars 3 Pocket Waist Apron



Keep tools and small accessories handy with waist mount apron
3 Large access pockets
Tie strap closure
Durable polyester construction

Item	Ea.
FIS-9428	\$11.47

Fiskars Multi-Pocket Holster



Compact tool belt mounts at hip
Holds cell phone and several small tools
Adjustable buckle strap
Durable polyester construction
Handy house key clip
Pen/Pencil loop

Item	Ea.
FIS-9433	\$13.31

Kaddy Products

Lightweight, durable nylon construction (unless otherwise noted). Belts are fully adjustable with snap buckles.

Stocked in Forest Green (02) and Black (01), but available in 6 other colors:

•Navy Blue (03) •Kelly Green (04) •Royal Blue (05) •Burgundy (06) •Red (07) •Purple (08) •Brown (09)

Kaddy Clipper Pocket



This vinyl pocket clips onto your belt and will hold either 2 clippers or 1 clipper and 1 scissor. 3.25" wide x 4" long with a 3.5" clip on the back.

Item	Ea.
KP100-	\$21.68

Kaddy Belt w/ Snap Buckle



Has large pocket 15.5" x 13" with three smaller pockets inside. Outer pocket has velcro closure. Belt has padding on it for more support. Holds tools, paperwork, bottles, phone, and anything else you may need with you.

Item	Ea.
KP400-	\$40.50

Kaddy Half Apron



Three durable pockets for carrying a wide range of tools and one smaller pocket with velcro closure. Pockets measure 8 1/2" x 8". The apron is 26" wide x 15.5" long and has a strong belt with snap buckles. Plenty of room for all your tools and paperwork.

Item	Ea.
KP200-	\$30.66

Large & Small Pocket Kaddy



Small-KP301

6.5" x 12" with a fully adjustable belt and 1.5" standard buckle. 4 pockets of varying sizes, one with velcro closure.

Large-KP302

9.5" x 12" with a fully adjustable belt and 1.5" standard buckle. 5 pockets of varying sizes, one with a velcro closure.

Item	Ea.
KP301-	\$25.50
KP302-	\$32.80

In-stock orders will be shipped within a 24 hour time frame.



800-872-4361

www.primescapeproducts.com

"SE HABLA ESPAÑOL"

Interior Landscape Tools

Kaddy Products

Lightweight, durable nylon construction (unless otherwise noted). Belts are fully adjustable with snap buckles.

Stocked in Forest Green (02) and Black (01), but available in 6 other colors:

•Navy Blue (03) •Kelly Green (04) •Royal Blue (05) •Burgundy (06) •Red (07) •Purple (08) •Brown (09)



Plant Tech Bag 2000

This plastic lined bag has 2 large (clipboard size) pockets, 3 tool pockets, 2 bottle pockets and 1 secured pocket. 20" long x 9" wide x 12" deep.

Also Available: *Jr. Plant Tech Bag* 12" long x 9" wide x 12" deep

Item	Ea.
KP500-	\$64.95

Item	Ea.
KP501-	\$57.50



Trash Bags

Durable nylon bag for storing leaves and other refuse. Round, wire-lined opening stays open for easy access.

Item	Round		Height
	Opening	Bottom Width	
KP601-	6"	8.5"	12.5"
KP602-	7"	11.5"	14.5"
KP603-	8"	13.5"	20.5"
KP604-	10"	15.5"	25.5"

Easily attaches to belts and watering machines with velcro loop.

Item	Ea.
KP601-	\$12.95
KP602-	\$15.11
KP603-	\$17.46
KP604-	\$20.78



Shoulder Tote

Durable nylon shoulder tote has clear plastic interior lining and reinforced stitching for heavier loads. Multiple pockets for storage.

Item	Ea.
KPSTB-	\$45.25



Round Tote

Durable nylon round bag with pockets lining the interior frame. Particle board removable base creates a sturdy base for any heavy tool. 10" Diameter throughout.

Item	Ea.
KPBAG-	\$44.85

3-Pocket Waist Apron



3-pocket construction, 19" wide x 14" high. Fits up to waist size 40". Sap-resistant fabric in Hunter Green or Navy Blue.

Item	Ea.
A-G	\$22.97
A-B	\$22.97

In-stock orders will be shipped within a 24 hour time frame.



800-872-4361

www.primescapeproducts.com
"SE HABLA ESPAÑOL"

Fertilizers, Cleaners, & Pest Control

PLEASE REFER TO OUR WEBSITE FOR LABELS & MSDS SHEETS

Psi Matric Watering Regulating Surfactant



Guaranteed Minimum Analysis:
NPS Alcoholated Polyols

Distributes water and chemicals throughout the grow pot or container. Improves size and uniformity of root and shoot growth. Reduces drying around the edges of containers and improves plant survival rate after transporting. Ask your Primescape representative about using this product with **Companion**, **EcoEXEMPT IC²** and **Superthrive** as a "green drench" to maintain healthy plants.

Item	Description	Case	Ea.	Case
C-PSI-GAL	1 gal.	4	\$119.72	\$478.88

HM-10 Time Release Fertilizer



For Sub-Irrigation

Releases only as the plant uses fertilizer will not over-fertilize! Nutrients in ionic form and includes 10 trace minerals. No mixing required!

Item	Description	Case	Ea.	Case
C-HM10	33.8 oz.	10	\$34.94	\$349.40

Primescape Liquid Tropical Fertilizer Concentrate



An excellent 9-3-6 ratio fertilizer that nourishes plant health with essential elements. Non-staining PRIMESCAPE FERTILIZER is also chloride-free. Use

each time you water your tropical plants.

Item	Description	Case	Ea.	Case
CPF-16	16 oz.	12	\$ 9.20	\$110.40
CPF-128	1 Gal.	4	\$ 27.98	\$111.92
CPF-5	5 Gal.	1	\$134.10	\$134.10



Drum Pail Pump

Fits 5 gal. and 55 gal. of Primescape Fertilizer.

Item	Case	Ea.
C-Pump	1	\$20.12



Pro-Tekt

Increases plants metabolic activity and resistance to pathogens and environmental stresses. A concentrated liquid supplement which supplies higher levels of potassium and silicon to build strong cell walls in plants.

Item	Description	Case	Ea.	Case
C-PT-8	8 oz.	12	\$5.28	\$ 63.36
C-PT-QT	36 oz.	12	\$8.82	\$105.84

Hormex Liquid Concentrate



Concentrated vitamins and hormones. Used to stimulate root growth, for rooting cuttings, and also to reduce transplant shock.

Item	Size	Case	Ea.	Case
HC-1216	1 Pint	12	\$ 9.95	\$119.40
HC-4128	1 Gal.	4	\$57.05	\$228.20

Superthrive Plant Growth Hormone



Mix of 50 vitamins and minerals to boost plant health. Made from Carbon-Hydrogen-Oxygen natural organic crystals.

Not a fertilizer. Mix with a fertilizer or with clean water. Use regularly for stronger flowers, leaves, and roots. Ask your Primescape representative about using this product with **Companion**, **EcoEXEMPT IC²** and **PSI Matric** as a "green drench" to maintain healthy plants.

Item	Description	Case	Ea.	Case
C-ST4	4 oz.	12	\$ 9.33	\$111.96
C-ST16	16 oz.	12	\$ 30.61	\$367.32
C-ST32	32 oz.	12	\$ 53.66	\$643.92
C-ST128	128 oz.	4	\$153.71	\$614.84

In-stock orders will be shipped within a 24 hour time frame.



800-872-4361

www.primescapeproducts.com

"SE HABLA ESPAÑOL"

Fertilizers, Cleaners, & Pest Control

PLEASE REFER TO OUR WEBSITE FOR LABELS & MSDS SHEETS



Growth Products Liquid Fertilizers, Micros, & Organics



Companion is a unique microbial inoculant that contains millions of beneficial soil microbes. It promotes a healthy, clean root system that resists stress and transplant shock. Ask your Primescape representative about using this product with **Superthrive**, **EcoEXEMPT IC²** and **PSI Matrix** as a "green drench" to maintain healthy plants.

Item	Description	Ea.
GP-COMP-Q	1 Qt.	\$29.68



Essential is a powerful natural organic soil conditioner and plant food. It stimulates vigorous root growth. Essential improves poor soil conditions, adds organic matter, and promotes better nutrient uptake.

Item	Description	Ea.
GP-ESS-Q	1 Qt.	\$14.29



18-3-6 is an all purpose fertilizer with 9% slow release nitrogen. 18-3-6 will feed your plants evenly and consistently for up to 4 weeks. It contains important micronutrients that provide vigorous growth and superior color.

Item	Description	Ea.
GP-FERT-Q	1 Qt.	\$7.26

Leaf-Tek® Plant Leaf Cleaner



Ready-to-Use

Safe for all live plants including delicate ferns and palms. Leaf-Tek lifts and removes dirt and dust from the leaf and washes it away. Leaf-brite contains no mineral oil, allowing the plant to breath and absorb light. Spray on let dry.

Concentrate

Won't remove water and calcium spots.

Item	Description	Case	Ea.	Case
<u>Ready-to-Use</u>				
CLT-22	16 oz.	12	\$ 4.02	\$ 48.24
CLT-1RTU	1 Gal.	4	\$ 10.40	\$ 41.60
<u>Concentrate</u>				
CLT-1	1 Qt.	4	\$ 31.20	\$124.80

(New SUPER concentrated formula now fits in quart bottle!)

Silkbrite® Silk Plant Cleaner



Ready-to-Use

Hard-to-clean silk plant material is now easier to clean with Silkbrite. No mineral oil or sticky residue to attract dust. Alcohol-free Silkbrite will not cause dyes to run. Spray and let dry.

Concentrate

Item	Description	Case	Ea.	Case
<u>Ready-to-Use</u>				
CSB22	16 oz.	12	\$ 4.15	\$ 49.80
CSB-1RTU	1 Gal.	4	\$ 10.73	\$ 42.92
<u>Concentrate</u>				
CSB-1	1 Qt.	4	\$ 31.98	\$127.92

(New SUPER concentrated formula now fits in quart bottle!)

Primescape Products Citrus Formula



A unique blend of natural ingredients that will provide the results you need. When it comes to cleaning plants, results count and this is precisely why this product is for you! Out shine your competition with clean and healthy plants. Avoid contact with etched glass.

Item	Description	Case	Ea.	Case
C-CIT-QT	1 Qt.	4	\$20.77	\$ 83.08
C-CIT-GAL	1 Gal.	4	\$74.10	\$296.40

In-stock orders will be shipped within a 24 hour time frame.



800-872-4361

www.primescapeproducts.com

"SE HABLA ESPAÑOL"

Fertilizers, Cleaners, & Pest Control

PLEASE REFER TO OUR WEBSITE FOR LABELS & MSDS SHEETS

Maintenance One™ All-Purpose Cleaner



All purpose cleaner that removes dirt and residue from plants or hard surfaces. Biodegradable and rinse-free. Leaves a fresh pleasant scent. Not for use on glass or unsealed wood.

Item	Description	Case	Ea.	Case
513104	1 Qt.	12	\$ 4.59	\$55.08
513066	1 Gal.	4	\$10.65	\$42.60
513025	5 Gal.	1	\$45.18	\$45.18

Foliglo Foliage Cleaner and Leaf Shine Concentrate



Concentrate

Removes dirt, calcium, iron, and water deposits. Do not wipe off - spray until dripping.

Item	Description	Case	Ea.	Case
C-FC-QT	1 Qt.	8	\$ 36.22	\$289.76
C-FC-GAL	1 Gal.	4	\$130.49	\$521.96

Pixie Sparkle Leaf Shine & Cleaner



Concentrate

Item	Size	Case	Ea.	Case
CPS-1	1 Gal.	4	\$21.11	\$84.44

Ready-To-Use (limited availability)

Item	Size	Case	Ea.	Case
CPS-1RTU	1 Gal.	4	\$ 8.19	\$32.76



EcoEXEMPT IC²

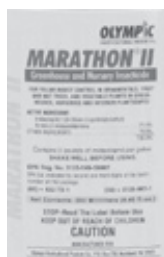
Made from essential oils, this natural pesticide is effective against a wide variety of indoor and outdoor pests. The best part is that NO REGISTRATION with the EPA is required for this product. Its active ingredients include rosemary and peppermint oils which actually target and block a key neurotransmitter receptor site for octopamine, which is found only in invertebrates (insects). Once blocked, the bugs' nervous systems shut down and lead to a quick death. Mammals don't have receptors for octopamine, so EcoEXEMPT's plant oils have no adverse effect on them. Ask your Primescape representative about using this product with **Companion**, **Superthrive** and **PSI Matric** as a "green drench" to control fungus gnats.

Item	Size	Case	Ea.	Case
ECO-IC2	1 Gal.	4	\$ 68.82	\$275.28
ECO-IC2-QT	1 Qt.	8	\$ 18.50	\$148.00

NEW SIZE!

NOTE: This product does have a strong odor at the onset. Before using, it is best to advise nearby people that the smell is a by-product of the mixture of natural oils, NOT harmful chemicals!

EcoEXEMPT IC²'s active ingredients are included on the EPA's minimum-risk pesticides list exempted under FIFRA Section 25(b).



Marathon II

For foliar and systemic insect control in turfgrass, landscape ornamentals and interior plantscape. Eliminates virtually all major pests with the exception of spider mites. Excellent drench for fungus gnat treatment.

Item	Description	Ea.
C-MARA-II	250 ML	\$320.45

Talstar® F



Broad insect control and a true miticide. Low odor, no residue, and is non-irritating. Active ingredient is bifenthrin.

Item	Description	Case	Ea.
C-TS-QT	1 Qt.	1	\$122.50

In-stock orders will be shipped within a 24 hour time frame.



Whitmire[®] Research's X-Clude



Microencapsulated Natural Pyrethrium Aerosol **increased effectiveness with decreased human toxicity!** LD 50 is over 34,000 mg./kg. X-clude is over 27 times less toxic than regular pyrethrium. The aerosol spray allows applicator more accuracy. Kills all common interiorscape insects - mites, aphids, thrips, gnats and scale.

Item	Description	Case	Ea.	Case
XA	20 oz net fill weight	12	\$13.53	\$162.36

NOTE: Store at temps above 70° F.

Whitmire[®] Yellow Monitoring Cards

Sticky surface traps flying insects such as white flies and fungus gnats for monitoring of pesticide effectiveness. **Must order in multiples of 48 cards!**

Item	Case	Ea.	Case
C-MC-YW	48	\$.48	\$23.04



Merit[®] 75 WSP Insecticide

For foliar and systemic insect control in turfgrass, landscape ornamentals and interior plants. Eliminates virtually all major pests with the exception of spider mites. One application lasts 12 weeks.

Item	Case	Ea.
<u>Concentrate</u>		
C-MT-75WSP	1 Pack contains 4 Packets	\$236.89

Merit[®] 0.5G Insecticide

A granular interiorscape pesticide, the 0.5 G version of Merit allows direct application to soil without any pre-dilution. Just sprinkle on and water as usual.

Item	Case	Ea.
<u>Ready-To-Use</u>		
C-MT-0.5G	30lb. Bag	\$140.84



Safer[®] Insecticidal Soap/Insect Killer Ready-to-Use

32 oz.. for the same price as 24 oz.. Effective against aphids, mealy bugs, mites, and other common pests. Biodegradable. Convenient ready-to-use form.

Item	Description	Case	Ea.	Case
CS-IS32	32 oz.	12	\$ 6.47	\$ 77.64



Tree Mover

Gantry with Beam Lifters

Especially designed to satisfy the need for short distance moving, lifting, and placing large specimens into planters or planting areas. It enables interiorscapers to accomplish this work with only three operators where normally as many as six are needed. The Tree Grantry's light-weight and fast disassembly and reassembly make it easy to store when not in use. 1 to 2 ton capacity.

Item	Each
G-BL	Call for Quote

In-stock orders will be shipped within a 24 hour time frame.

Mona systems ensure that water and nutrients are delivered in the right quantity, directly to the root of the plants. Try one today, and reduce your liquid fertilizer usage by up to 75%!



MONA Tank Reservoirs*

*Comes complete with fill tube, floats and capillary legs

STOCK ITEMS We stock all MONA tanks, links and parts, and will ship within 24 hours.

Tank	Item No.	Fill Tube	Use in pot w/ this I.D.	Diameter	Height	Water Capacity	Case Pk.	Price
1 Liter	M-01LT	7.5"	6-7"	6"	2.5"	2 pints	30	\$ 8.64
1.5 Liter	M-01 1/2LT	9"	8"	7.25"	2.5"	1.375 qts.	20	\$ 11.10
2 Liter	M-02LT	12"	9-12"	8.25"	2.5"	2 qts.	20	\$ 11.69
4 Liter	M-04LT	17"	12-15"	9.5"	4"	3.75 qts.	20	\$ 16.56
6 Liter	M-06LT	17"	12-15"	5.63"	5.88"	6 qts.	15	\$ 24.93
10 Liter	M-10LT	17"	16-20"	15"	4"	9.5 qts.	10	\$ 31.70

Six-month warranty for defects in material.

Does not apply to misuse, abuse, accident, etc.



MONA Link Reservoirs**

** Only comes with capillary legs and air vents, other are parts required to complete system!

Link Unit	Item No.	Planting Depth	Length	Width	Height	Water Capacity	Case Pk.	Price
3 Liter	M-03LL6	7-8"	25"	5"	2.5"	.625 gal.	12	\$ 28.73
7 Liter	M-07LL6	14-24"	21.5"	6"	4"	1.375 gal.	9	\$ 31.54
24 Liter	M-24LL6	14-24"	36"	8"	6"	4.75 gal.	10	\$ 43.89
7 Liter (flexi)	M-FL77	9-13"	21.5-25.5"	6" diam.	n/a	2.25 gal.	10	\$ 35.19

Replacement of units or parts does not extend the warranty beyond its initial period.

Flexible Fill Tube Assemblies*

Item	Description	Case	Ea.	Case
M-FT9	9"	10	\$4.47	\$44.70
M-FT12	12" (float incl)	10	\$7.19	\$71.90
M-FT17	18.5" (float incl)	10	\$7.27	\$72.70
M-FT20	22" (float incl)	10	\$8.95	\$89.50

* Made using 30mm fill tube, hinged cover cap and fill tube basket. Collars/Rings sold separately.

Indicator Float

Water level indicator guide for flexible fill tube. Can be cut to fit odd sizes, if required.

Item	Length	Case	Ea.	Case
M-LIF9	9"	10	\$1.71	\$17.10
M-LIF12	12"	10	\$2.51	\$25.10
M-LIF19	19"	10	\$2.74	\$27.40
M-LIF38	38"	10	\$3.63	\$36.30

Capillary Legs

Item	Length	Fits	Case	Ea.	Case
M-CL3	9"	03LL6, 01LT, 01 1/2LT, 02LT	10	\$1.12	\$11.20
M-CL7	12"	07LL6, 04LT, 06LT, 10LT	10	\$1.35	\$13.50
M-CL24	19"	24LL6, FL77	10	\$1.55	\$15.50

30 mm dia. Fill Tube/Connecting Tube Reel



82' long Flexible tubing used in 30 mm Flexilink connections/ 30 mm Custom Fill Tubes.

Item	Description	Ea.
M-CTR	82' long	\$236.96
M-CTR-FT	Tubing by the foot	\$3.15/FT

60 mm dia. Connecting Tube

Item	Case	Ea.	Case
M-CT6	10	\$10.21	\$102.10

Brown flexible tubing. Pre-cut 36".

In-line Connector for 60mm tube

Item	Length	Ea.
M-EC6	8"	\$13.65

60 mm dia. End Cap

Item	Case	Ea.	Case
M-ES6	10	\$3.59	\$35.90

60 mm Hinged Fill Tube Cap

Item	Case	Ea.	Case
M-CC6	10	\$8.61	\$86.10

Wide-mouth 30mm Hinged Cover Cap



Item	Case	Ea.	Case
M-CC2	10	\$2.03	\$20.30

30mm Hinged Cover Cap

Item	Case	Ea.	Case
M-CC	10	\$5.33	\$53.30

30mm dia. End Cap

Item	Case	Ea.	Case
M-ES3	10	\$1.90	\$19.00

30mm T-Pipe

Item	Ea.
M-TC3	\$5.95

30mm Fill Tube Basket

Item	Case	Ea.	Case
M-FTB	10	\$.93	\$9.30

30mm Fill Tube Collar/Ring

Item	Case	Ea.	Case
M-FTR	10	\$1.50	\$15.00

60 mm dia. O-Ring Seal

Item	Case Pack	Ea.	Case
M-CTO	20	\$1.18	\$23.60

Air Vent

Item	Case	Ea.	Case
M-AV	10	\$1.02	\$10.20



Three year warranty for defects in material, limited only to parts that do not fall under standard regular maintenance for the planter. Does not apply to misuse, abuse, accident, etc. Replacement of units or parts does not extend the warranty beyond its initial period.

Achieve a perfect balance of moisture and oxygen levels in your soil at all times with Planter Technology's container irrigation systems. Primescape offers the perfect unit for any planter. Give us a call today to learn more about what sub-irrigation can do for you!



CWC[®] Classic Container Irrigation System **INDOOR/OUTDOOR**

Item	Outside Dia. Top/Bottom	Inside Dia. Top/Bottom	Overall Height	Inside Height	Water Capacity	Price
CWC-R1100	12"/10.5"	11"/9"	13.5"	12.5"	2 Gal.	\$ 60.50
CWC-R1500	17"/10"	15.5"/8.5"	17"	15"	3 Gal.	\$ 99.50
CWC-R1850	20.5"/15.5"	18"/13"	19"	17"	5 Gal.	\$ 159.50
CWC-1300	14.5"/8"	13"/7.5"	12.5"	11"	1.2 Gal.	\$ 55.00
CWC-1500	16.5"/10.5"	15"/8.5"	15"	13.5"	2.25 Gal.	\$ 68.00
CWC-1800	20.75"/14.5"	18"/11.5"	19"	17"	6 Gal.	\$ 106.00
CWC-2100	23.25"/13"	20.5"/12"	21.5"	19"	9 Gal.	\$ 139.75
CWC-2400	26"/15"	24"/13"	21"	18.75"	8 Gal.	\$ 180.50
CWC-2500	27.25"/17.5"	24.5"/15"	25"	22.5"	12.8 Gal.	\$ 185.75
CWC-2800	31"/19"	28.5"/17"	30"	28"	15 Gal.	\$ 269.01
CWC-3300	35"/23"	32"/21"	27"	34"	12 Gal.	\$ 297.01



CWF[®] Flower Bowl **INDOOR/OUTDOOR**

Item	Outside Diameter	Outside Height	Inside Diameter	Inside Height	Water Capacity	Empty Weight	Price
CWF-1706	17"	6.5"	15.25"	5.5"	1.2 Gal.	2.5 lbs.	\$ 49.96
CWF-2107	21"	7.5"	19.25"	6.5"	2 Gal.	4 lbs.	\$ 73.50
CWF-2508	25"	8.25"	23.25"	7.25"	3 Gal.	5 lbs.	\$ 101.50
CWF-2909	29"	9.25"	27"	8.25"	4 Gal.	7 lbs.	\$ 122.00
CWF-3410	34"	10.5"	32"	9.25"	5.5 Gal.	10 lbs.	\$ 139.00

Lead times for CWC & CWF units vary from three days to three weeks. Call your Primescape representative for more details.



CWI[®] Container Irrigation System **INDOOR or OUTDOOR**

Indoor Item No.	Outdoor Item No.	Outside Dia. Top/Bottom	Inside Diameter	Overall Height	Inside Height	Water Capacity	Indoor Price	Outdoor Price
PT-600		6.5"/5.25"	5.75"	6"	5"	1.75 Pints	\$ 14.44	
PT-750	PT-750X	8.75"/7.5"	6"	6"	5.5"	.4 Gal.	\$ 14.44	\$ 19.49
PT-800	PT-800X	9.12"/8.75"	7.5"	7"	6.5"	.6 Gal.	\$ 14.44	\$ 19.49
PT-1000	PT-1000X	11.25"/9.5"	9.5"	10"	8.75"	1 Gal.	\$ 16.75	\$ 21.99
PT-1200	PT-1200X	12.5"/10.5"	11"	11"	9.5"	1.5 Gal.	\$ 25.15	\$ 30.99
PT-1400	PT-1400X	15.75"/13.5"	14"	14"	12.75"	2 Gal.	\$ 36.70	\$ 39.98
PT-1650	PT-1650X	18"/16"	16"	16.5"	15.25"	4 Gal.	\$ 73.24	\$ 78.97
PT-1700	PT-1700X	18"/17"	17"	18"	17"	4.5 Gal.	\$ 78.71	\$ 83.97
PT-2200	PT-2200X	23.25"/21"	21.25"	19.75"	18"	8 Gal.	\$ 124.95	\$ 129.95

In-stock CWI units ship within 24 hours. Lead times for CWM units vary from three days to three weeks. Call your Primescape representative for more details.



CWM[®] Modular Irrigation System (custom-fit container links)

For odd-shaped or oversized plant beds, Primescape proudly offers many CWM[®] Modular options. Planter Technology has devised a unique system that combines all the benefits of their other units with the flexibility of modular engineering. Call Primescape today for a consultation.

In-stock orders will be shipped within a 24 hour time frame.



Funnels



Ideal for filling reservoirs.

Item	Size	Each
PT-FUN6	6"	\$3.18
PT-FUN18	18"	\$3.02

Rubber Stoppers



For plugging the fill port of all Planter Technology units.

Item	Each
PT-STP	\$.81

Replacement Moisture Sensors

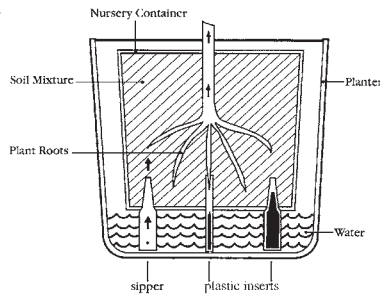
For use in all Planter Technology units. Contact your Primescape representative for more information on which sensor is right for your container.



Item	Each
PT-SENSOR10	\$1.63
PT-SENSOR12	\$1.63
PT-SENSOR14	\$1.63
PT-SENSOR16	\$1.63
PT-SENSOR17	\$1.63
PT-SENSOR22	\$1.63

Sippers

Excellent for poinsettias and other plants that don't like over-saturated roots.



Keep blooming plants alive longer. Simply insert one Sipper (along with 3 plastic support inserts, included) into the bottom holes of the grow pot and set in a container. Add water to the container, stopping just below the bottom of the grow pot. Refill as necessary and your plant will grow happily! Patent Pending. Sippers are intended for commercial use only. Must order in sets of four (set = 1 sipper, 3 legs).

Item	Set Pack	Each	Set	Case Pack	Case
SIP-300	4 pcs. (1 sipper, 3 legs)	\$.66 (x 4)	\$2.64	100 pcs. (25 sippers, 75 legs)	\$66.00

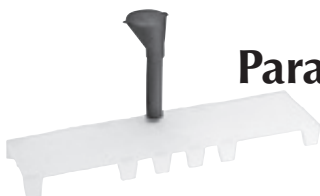


Water Tech Sub-Irrigation

Make faster replacements! Works with a capillary pad and water reservoir. Fits easily into straight-sided cylinder decorative containers or buried in planter beds.

Item	Diam.	Height	Capacity	Grow Pot	Case Pk.	Each	Case
M-WT	8"	6.38"	20 oz.	6-6.5"	10	\$4.08	\$40.80

Paramount Sub-Irrigation



Developed specifically for Paramount Planters. Place this durable polypropylene insert in the Paramount. Complete with fill tube and cap.

Item	Length x Width	Capacity	Fits	Case Pk.	Ea.	Case
M-0024	25.63" x 6.75"	.5 Gal.	V2407	4	\$2.49	\$ 9.96
M-0030	29.63" x 6.75"	.75 Gal	V3007	4	\$2.71	\$10.84

Bio-Barrier Root Control System



Prevents roots from clogging inlet holes. Long-lasting material won't wear out, break down, or decompose. Especially important for aggressive rooted plants: Ficus benjamina, Rhapsis Palm, etc.

Item	Case Pack	Each	Case
PT-BGP	25	\$1.13	\$28.25

Researchers have adapted the electrostatic spraying technology to significantly enhance the way chemical applications are performed in interior settings. The technology will allow interiorscapers to spray much more efficiently and to improve the results of the spray applications. The Electrostatic Spraying Systems Co. has introduced this technology in their Model XT sprayers.

How Does It Work?

The sprayer puts a negative (static) charge on the fine stream of particle spray, which causes the spray to be attracted to the naturally positively-charged plants. As a result, these fine spray particles will cover all plant surfaces, including the backsides of stems and the underside of leaves.

This proven method of air delivery is the most effective system developed for moving spray droplets deep into inner regions of plants. Because of this static attraction and fine misting, you will use less chemicals than with conventional sprayers, and will have very little overspray. Consequently, the set-up time for covering surrounding areas with plastic is virtually eliminated, and clean-up is much quicker.



XT Benefits

- Reduction in chemical used by 30-60%.
- Spraying time cut in half.
- Reduced spray time allows for spraying more accounts in order to keep infestations manageable.
- Eliminates need to lay plastic prior to spraying for less disruption to your client.
- Better kill rate on chemical applications for healthier plants.

XT Features

- Single port electrostatic spray gun.
- Compatible with all conventional chemicals and fungicides.
- Portable, self-contained.
- 110 volt, 10 amp compressor.
- Main tank holds enough mix for one hour of spraying.
- One liter auxiliary tank for easy spot spraying.
- 18" wheelbase perfect for narrow pathways.

Technical Specifications

- Tank..... 3 gal.
- Size.....42"x18"x24"L
- Weight..... 105 lbs.
- Air Line Pressure..... 30 psi
- Tank Pressure..... 12-15 psi
- Flow Rate..... 2 gal./hr.
- Drop Size..... 40 microns VMD
- Spray Range..... Up to 12 ft.
- Air Hose..... 50 ft.

Item	Each
W-XT	\$3,352.65



DRAMM

DRAMM Heavy-Duty Sprayer



A hydraulic sprayer with adjustable pressure up to 500 PSI, from a 20-foot stream to an 8-foot diameter mist. 33-foot discharge hose. For application of pesticides, wetting agents, and cleaning solutions. Comes complete with an 18-inch wide rugged aluminum cart and adjustable trigger gun. Other hose lengths available.

20 Gallon Tank!



**Does not come with hose reel.*

Item	Ea.
MS20-33	\$1075.07

DRAMM Watering Tools

DRAMM Water Breaker-Cyclac Plastic



Ideal for watering large planting beds. Apply a large volume of water evenly. Simply attach to hose or shut-off valve

Item	Ea.
H-DWB	\$5.00

DRAMM Plastic Shut-Off Valve



Designed to withstand higher water pressures. Fingertip water control. Durable plastic construction.

Item	Ea.
H-DV	\$4.75

DRAMM Brass Shut-Off Valve



Fingertip water control. Brass construction.

Item	Ea.
H-DBV	\$17.09

DRAMM 36" Long Handi-Reach Handle



The Handi-Reach is designed to eliminate the stretching and stooping associated with hand watering. Constructed of hard drawn aluminum with brass couplings and plastic hand grip.

Item	Ea.
H-DH	\$8.94



800-872-4361

www.primescapeproducts.com

"SE HABLA ESPAÑOL"

Watering Machines

Each Aquamate comes complete with a wand valve, multiple spray heads, two watering tubes, utility bag, and a maintenance kit. Two-year warranty on tank and one year warranty on all parts.*

AQUA Mate™

Portable Water Delivery System



	Item	Width	Depth	Height	Water Capacity	Empty	Full	Price
* W-2 and W-3 offer an adjustable 8"-10" of additional handle height	*W-2	18.13"	6.5"	34.5"	8-10 Gal.	42 lbs.	118 lbs.	\$ 658.74
	*W-3	18.5"	17"	42"	12-14 Gal.	50 lbs.	160 lbs.	\$ 786.69
	W-4	25.38"	24"	40"	20-22 Gal.	95 lbs.	290 lbs.	\$ 995.60
	W-5	28.13"	32"	47"	28-30 Gal.	125 lbs.	370 lbs.	\$1,182.53
	W-6	28.13"	32"	54"	40-44 Gal.	145 lbs.	500 lbs.	\$1,337.46

Warranty excludes physical damage and malfunctions resulting from freezing.

Plant Food Filler

Item	Description	Each
W-PFF	20 oz.. For models 2 & 3	\$55.79
W-PFFL	40 oz.. For models 4, 5, & 6	\$61.98

Wand Valves

Item	Description	Each
W-WV	Chrome plated wand valve w/ socket	\$25.83
W-BWV	Premium Wand Valve	\$25.83
W-BA	Ball Valve Assembly	\$23.09

Wand Tubes

Item	Description	Each
W-SWT1	Standard Wand Tube - 12"	\$16.80
W-SWT2	Standard Wand Tube - 24"	\$19.36
W-SWT3	Standard Wand Tube - 36"	\$21.79
W-BWT1	Basket Wand Tube - 12"	\$16.80
W-BWT2	Basket Wand Tube - 24"	\$19.36
W-BWT3	Basket Wand Tube - 36"	\$21.79

Watering Heads

Item	Description	Each
W-BH	For general watering	\$4.55
W-SH	For large bed areas or leaf cleaning	\$4.55
W-MH	For misting, apply pesticides, leaf shine	\$4.55

Faucet Adapter

Item	Description	Each
W-TFA	Use with kitchen / bath faucets	\$4.55



Trays & Trash Bags

Item	Description	Each
W-RDTRAY	Round Tray	\$13.04
W-TRR	Round Tray Rack	\$17.40
W-SQTRAY	Square Tray	\$13.04
W-SQRACK	Square Tray Rack	\$22.35
W-TB-G	Trash Bag (W-2 & W-3)	\$33.49
W-TBL-G	Trash Bag (Large) (W-4, -5, & -6)	\$39.69

Casters

Item	Description	Each
CST4	4" Caster for W-2 and W-3 Units	\$14.35
CST5	5" Caster for W-4 and W-5 Units	\$17.35
CST6	6" Caster for W-6 Unit	\$23.55

In-stock orders will be shipped within a 24 hour time frame.



800-872-4361

www.primescapeproducts.com

"SE HABLA ESPAÑOL"

Watering Machines



Three-year warranty on tank and one year warranty on hoses, wheels & frame. Three month warranty on wands, valves, and nozzles.* Tank wraps come in choice of three colors: NAVY BLUE, FOREST GREEN, and JET BLACK.

* Warranty excludes physical damage and malfunctions resulting from extreme weather and temperatures. 120°F max. temp on all units except WBM-16HT.



NEW

WBF-12 Mini 12-Gallon Fiberglass (11-12 gallons of useable water)

- Depth/Width/Height 20" x 20" x 36"
- Tank size: 16 gallons
- Empty weight: 45 lbs.
- Filled weight: 136 lbs.
- 12' SuperFlex hose w/ shut off valve
- Filling time: 3 Min.
- 2 - 8" medium-duty wheels
- 3 - 3" casters, 3rd front anti-tip caster
- Easy metal loading wheels/handle
- Rubber hand grips
- Sink-to-hose adapter
- Deluxe wand w/ no drip tip
- Tank wrap (choice of 3 colors)
- 13-qt. trash bag w/ 3 pockets and Rubbermaid waterproof liner
- Storage box with lid
- Drip cup with large sponge

Price : \$899.57



WBF-20 20-Gallon Fiberglass (19-20 gallons of useable water)

- Depth/Width/Height 26" x 20" x 42"
- Tank size: 22 gallons
- Empty weight: 55 lbs.
- Filled weight: 212 lbs.
- 12' SuperFlex hose w/ shut off valve
- Filling time: 4 Min.
- 2 - 8" medium-duty wheels
- 3 - 3" casters, 3rd front anti-tip caster
- Easy metal loading wheels/handle
- Rubber hand grips
- Sink-to-hose adapter
- Deluxe wand w/ no drip tip
- Tank wrap (choice of 3 colors)
- 13-qt. trash bag w/ 3 pockets and Rubbermaid waterproof liner
- Storage box with lid
- Drip cup with large sponge

Price : \$928.00



NEW

WBF-40 High-Volume! 40-Gallon Fiberglass (38-40 gallons of useable water)

- Depth/Width/Height 32" x 23" x 48"
- Tank size: 50 gallons
- Empty weight: 90 lbs.
- Filled weight: 405 lbs.
- 12' SuperFlex hose w/ shut off valve
- 9' Quick-Dump hose w/ shut off valve
- Filling time: 8 Min.
- 2 - 10" heavy-duty wheels
- 3 - 4" casters, 3rd front anti-tip caster
- Easy metal loading wheels/handle
- Rubber hand grips
- Sink-to-hose adapter
- Deluxe wand w/ no drip tip
- Tank wrap (choice of 3 colors)
- 13-qt. trash bag w/ 3 pockets and Rubbermaid waterproof liner
- Storage box with lid
- Drip cup with large sponge

Price : \$1,099.94



NEW

**High-Temperature! WBM-16 HT 16-Gallon Metal (14-16 gallons of useable water)

- Depth/Width/Height 20" x 20" x 42"
- Tank size: 20 gallons
- Empty weight: 55 lbs.
- Filled weight: 179 lbs.
- 12' SuperFlex hose w/ shut off valve
- Filling time: 4 Min.
- 2 - 8" medium-duty wheels
- 2 - 3" casters
- Storage box (no lid)

FREE UPGRADE FOR 2009:

- Metal loading handle
- Loading Wheels on handle
- 3rd anti-tip caster
- Storage box lid

Price : \$699.78

** For use in hot climates where tank is exposed to hot sun. Max temp 240°F.

Looking to upgrade your Waterboy? Buy these accessories with your machine and save!



WB-117U[†]

28-qt. Deluxe trash bag with 13 pockets and liner

\$35.00



WB-116U[†]

20' Recoil hose with shut-off Valve

\$42.00



WB-101U[†]

Super-duty wheel assembly upgrade

\$35.00

[†] These discounted parts are only available with the purchase of a fiberglass or metal Waterboy unit. If you need to purchase these for an existing Waterboy machine, please refer to the accessories list on p. 27.



800-872-4361

www.primescapeproducts.com

Watering Machines



METAL SERIES

Three-year warranty on tank and one year warranty on hoses, wheels & frame. Three month warranty on wands, valves, and nozzles.* Comes in three sleeve colors: NAVY BLUE, FOREST GREEN, and JET BLACK.

* Warranty excludes physical damage and malfunctions resulting from extreme weather and temperatures. 120°F max. temp on all units except WBM-16HT.

NEW



WBM-11 SE Super Economy
(10-11 gallons of useable water)

- Depth/Width/Height 24" x 20" x 38"
- Tank size: 14 gallons
- Empty weight: 46 lbs.
- Filled weight: 129 lbs.
- Filling time: 3-4 Min.
- 12' SuperFlex hose w/ shut off valve
- Storage box with no lid
- Sink-to-hose adapter
- Deluxe wand w/ no-drip tip
- 2 - 8" wheels
- 1 - 3" casters

Price: \$599.92

Optional Features:

- 13-qt. trash bag w/ three pockets and Rubbermaid waterproof liner
- Storage box lid

WBM-11
(10-11 gallons of useable water)

- Depth/Width/Height 20" x 20" x 36"
- Tank size: 14 gallons
- Empty weight: 49 lbs.
- Filled weight: 132 lbs.
- Filling time: 3-4 Min.
- 12' SuperFlex hose w/ shut off valve
- Storage box with no lid
- Deluxe wand w/ extendo-flex no-drip tip
- 2 - 8" rear wheels
- 2 - 3" casters
- Sink to hose adapter
- Rubber grips on handlebars

Price: \$618.45

Optional Features:

- 13-qt. trash bag w/ three pockets and Rubbermaid waterproof liner
- Storage box lid
- Loading wheels on handlebars
- Metal loading handle
- 3rd anti-tip caster

WBM-16
(15-16 gallons of useable water)

- Depth/Width/Height 20" x 20" x 42"
- Tank size: 20 gallons
- Empty weight: 55 lbs.
- Filled weight: 179 lbs.
- Filling time: 4-5 Min.
- 12' SuperFlex hose w/ shut off valve
- Storage box with no lid
- Deluxe wand w/ extendo-flex no-drip tip
- 2 - 8" rear wheels
- 2 - 3" casters
- Sink to hose adapter
- Rubber grips on handlebars

Price: \$656.25

Optional Features:

- 13-qt. trash bag w/ three pockets and Rubbermaid waterproof liner
- Storage box lid
- Loading wheels on handlebars
- Metal loading handle
- 3rd anti-tip caster

WBM-25
(24-25 gallons of useable water)

- Depth/Width/Height 31" x 23" x 43"
- Tank size: 32 gallons
- Empty weight: 75 lbs.
- Filled weight: 274 lbs.
- Filling time: 7-8 Min.
- 12' SuperFlex hose w/ shut off valve
- Work box with no lid
- Deluxe wand w/ extendo-flex no-drip tip
- 2 - 8" rear wheels
- 2 - 4" casters
- Sink to hose adapter
- Rubber grips on handlebars

Price: \$843.75

Optional Features:

- 13-qt. trash bag w/ three pockets and Rubbermaid waterproof liner
- Storage box lid
- Loading wheels on handlebars
- Metal loading handle

UTILITY SERIES



UCWB-11
(10-11 gallons of useable water)

- Depth/Width/Height 39" x 18" x 33"
- Tank size: 14 gallons
- Empty weight: 50 lbs.
- Filled weight: 133 lbs.
- Filling time: 3-4 Min.
- 12' SuperFlex hose w/ shut off valve
- Sink-to-hose adapter & utility tray
- 13-qt. trash bag w/ liner
- 4 - 5" swivel casters
- Deluxe wand w/ no-drip tip

Price: \$700.70

UCWB-14
(14-16 gallons of useable water)

- Depth/Width/Height 39" x 18" x 33"
- Tank size: 20 gallons
- Empty weight: 65 lbs.
- Filled weight: 181 lbs.
- Filling time: 4-5 Min.
- 12' SuperFlex hose w/ shut off valve
- Sink-to-hose adapter & utility tray
- 13-qt. trash bag w/ liner
- 4 - 5" swivel casters
- Deluxe wand w/ no-drip tip

Price: \$726.70

UCWB-18
(16-18 gallons of useable water)

- Depth/Width/Height 45" x 26" x 33"
- Tank size: 23 gallons
- Empty weight: 67 lbs.
- Filled weight: 200 lbs.
- Filling time: 5-6 Min.
- 12' SuperFlex hose w/ shut off valve
- Sink-to-hose adapter & utility tray
- 13-qt. trash bag w/ liner
- 4 - 5" swivel casters
- Deluxe wand w/ no-drip tip

Price: \$811.25



800-872-4361

www.primescapeproducts.com

"SE HABLA ESPAÑOL"

Watering Machines



Additional Spare Parts:

Item	Description	Each	Item	Description	Each
WB-101	14" Wagon Wheel Conversion Kit <small>The 14" wheel no longer exists! To retrofit (2) 10" wheels onto an older machine, this kit is required!</small>	\$67.50	WB-117	28-qt. Deluxe Trash Bag w/ 13 pockets only (not pictured)	\$45.02
WB-102	Kaddy Clip on Front Bag	\$28.15	WB-117A	28-qt. Deluxe Trash Bag w/ 13 pockets w/Liner	\$67.50
WB-103	12" Superflex Hose w/ Shut off Valve	\$28.15	WB-118	Large Sponge w/Drip Cup	\$ 8.98
WB-104	Shut off Flow Control Valve	\$16.88	WB-119	Rubber Hand Grips	\$ 4.52
WB-105	Watering Can Holder w/2 Sponges	\$22.48	WB-120	Loading Wheels (Set of 2)	\$13.50
WB-106	Thumb Valve	\$16.88	WB-121	CWI Adapter	\$ 4.52
WB-107	16" Dramm Wand	\$11.27	WB-122	Infuser Tube	\$ 6.75
WB-108	4.5" Extendo Flex No-Drip-Tip	\$13.50	WB-123	Squeeze & Pour Bottle	\$ 4.52
WB-109	EZ Load Slide Bar	\$22.48	WB-124	Steel Loading Handle	\$11.27
WB-110	Storage Box with lid	\$22.95	WB-125	3rd Front Wheel 3" Caster	\$13.50
WB-110A	Storage Box with no lid	\$14.00	WB-125A	3rd Front Wheel 4" Caster	\$16.88
WB-110B	Storage Box lid	\$ 9.80	WB-126	Medium Duty 8" Wheel	\$13.50
WB-111	F-12 Mini Tank Wrap	\$45.02	WB-126A	Heavy Duty 10" Wheel	\$22.48
WB-112	F-20 Tank Wrap	\$50.63	WB-127	Complete Deluxe Wand	\$33.75
WB-112A	M-25 Tank Wrap (not pictured)	\$50.63	WB-128	Sink to Hose Adapter	\$ 4.52
WB-113	F-40 Tank Wrap	\$56.30	WB-129	Deluxe Wand for Atomizer	\$67.50
WB-114	25' Straight Hose w/Shut Off Valve	\$45.02	WB-130	Atomizing Tips (not pictured)	\$ 7.90
WB-115	Quick Dump Hose w/ Shut Off Valve	\$45.02	WB-131	Bungee Strap	\$ 2.23
WB-116	20' Recoil Hose w/Shut Off Valve	\$78.77	WB-132	13-qt. Trash Bag w/ 3 pockets only (not pictured)	\$14.00
			WB-132A	13-qt. Trash Bag w/ 3 pockets w/ Liner	\$21.00
			WB-133	Reverse-osmosis filling pump for low-pressure systems	\$199.99



800-872-4361

www.primescapeproducts.com

Flowering Tree Frames

Holiday Splendor

Celebrate the holidays with a beautiful poinsettia tree!
All tree frames include support rings and watertight liners.
For best results, use 16" to 18" tall poinsettia plants.



In-stock orders will be shipped within a 24 hour time frame.

3' Full Diameter Tree Frame

29 plants on 3 tiers. (11) 6" plants can be placed around the base. Allow 4' diameter floor or counter space.

Item# FT3-Full

5' Full Diameter Tree Frame

51 plants on 7 tiers. (15) 6" plants can be placed around the base. Allow 7' ceiling height and 4' diameter floor space.

Item# FT5-Full

7' Full Diameter Tree Frame

96 plants on 10 tiers. (20) 6" plants can be placed around the base. Allow 9' ceiling height and 6' diameter floor space.

Item# FT7-Full

11' Full Diameter Tree Frame

193 plants on 15 tiers. (25) 6" plants can be placed around the base. Allow 13' ceiling height and 7' diameter floor space.

Item# FT11-Full

14' Full Diameter Tree Frame

300 plants on 19 tiers. (30) 6" plants can be placed around the base. Allow 16' ceiling height and 8' diameter floor space.

Item# FT14-Full

20' Full Diameter Tree Frame

587 plants on 26 tiers. (47) 6" plants can be placed around the base. Allow 22' ceiling height and 11' diameter floor space.

Item# FT20-Full



3' Half Diameter Tree Frame

18 plants on 3 tiers. (6) 6" plants can be placed around the base. Allow 2.5' depth and 4' width.

Item# FT3-Half

5' Half Diameter Tree Frame

27 plants on 7 tiers. (9) 6" plants can be placed around the base. Allow 7' ceiling height, 2' depth and 4' width.

Item# FT5-Half

7' Half Diameter Tree Frame

49 plants on 10 tiers. (12) 6" plants can be placed around the base. Allow 9' ceiling height, 3' depth and 6' width.

Item# FT7-Half

11' Half Diameter Tree Frame

97 plants on 15 tiers. (14) 6" plants can be placed around the base. Allow 13' ceiling height, 4' depth and 7' width.

Item# FT11-Half

14' Half Diameter Tree Frame*

Item# FT14-Half

20' Half Diameter Tree Frame*

Item# FT20-Half

Highlander's® Speed Covers

Item #	Size	Case	Each	
			Colors 01,02,03 & 04	Color 05 (Celebration)
BSC4-	4"	400	\$.36	\$.37
BSC6-	6"	250	\$.47	\$.48
BSC65-	6.5"	250	\$.49	\$.50
BSC8-	8"	150	\$.75	\$.80
BSC10-	10"	150	\$1.19	\$1.29



Celebration (05)
reflective pattern



Brite Gold (01) True Red (03)



Silver (02) Moss (04)



Black Watertight Liner

Item #	Top I.D.	Bott I.D.	Case	Each	Case
WPH-7	7.5"	5.5"	76	\$2.26	\$171.76

Replacement Support Rings

Item #	Case	Each	Case
EXR-1	25	\$2.58	\$64.50



* call for details and availability info

Primescape Products Fax Order Form

Bill to: _____

Ship to: _____

Email: _____

Phone #: _____

Fax #: _____

PO #: _____

Ordered By: _____

Item	Each Qty.	Color/Finish/Description
1.		
2.		
3.		
4.		
5.		
6.		
7.		
8.		
9.		
10.		
11.		

All products will ship standard ground service unless special arrangements are requested in writing below.

Comments: _____

Order Confirmation faxed or emailed within one business day.

PH: 800-872-4361 • Fax: 847-634-4126 • Email: char@primescapeproducts.com

Primescape Products Co.
485 East Half Day Road • Suite 450 • Buffalo Grove, IL • 60089-8809
Phone : 800.872.4361 • Fax : 847.634.4126
www.primescapeproducts.com